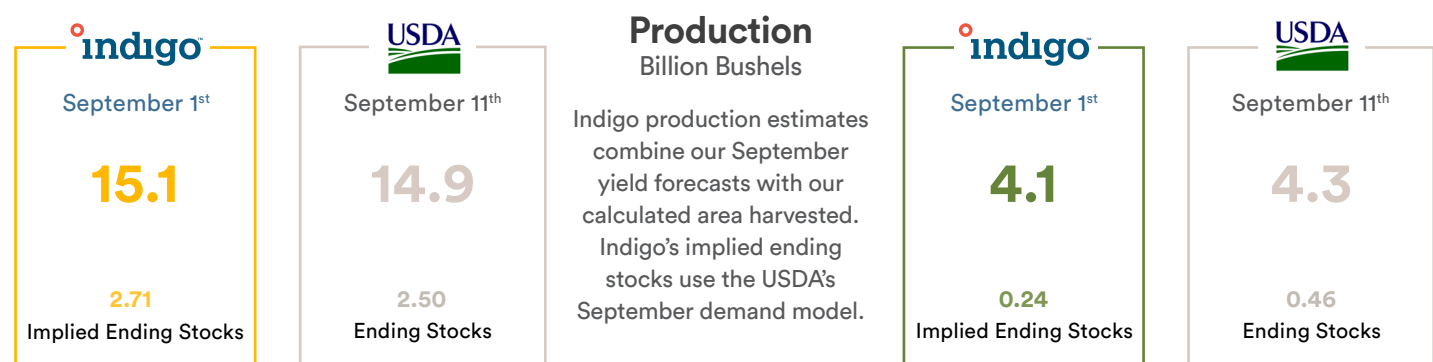
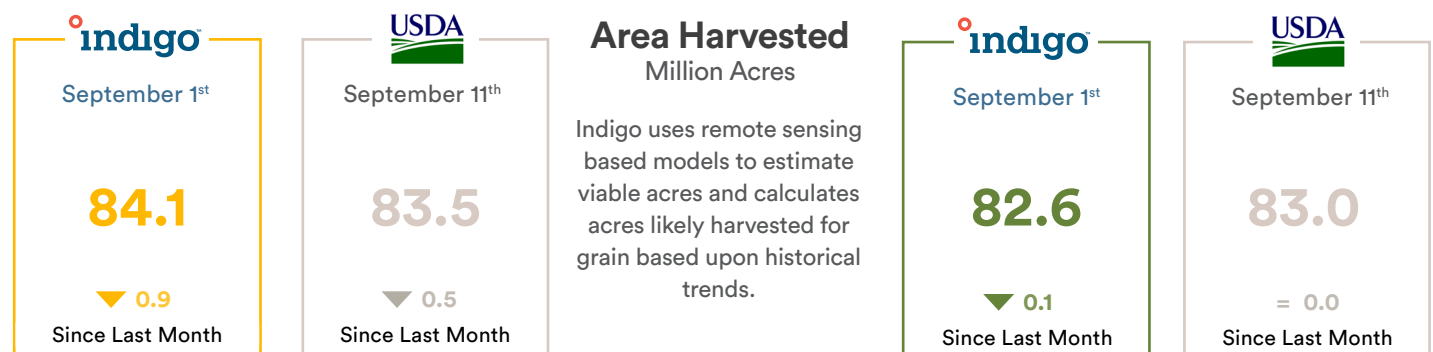
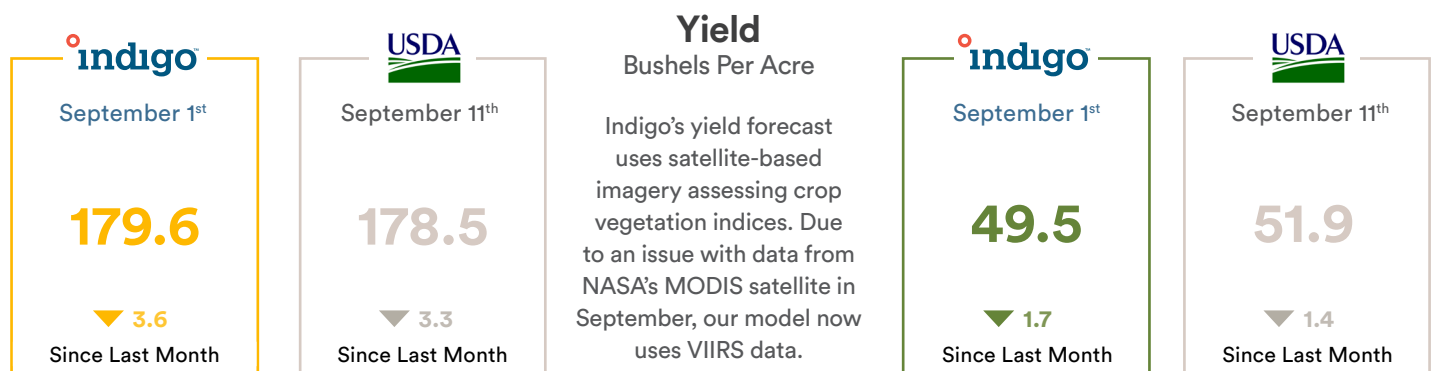
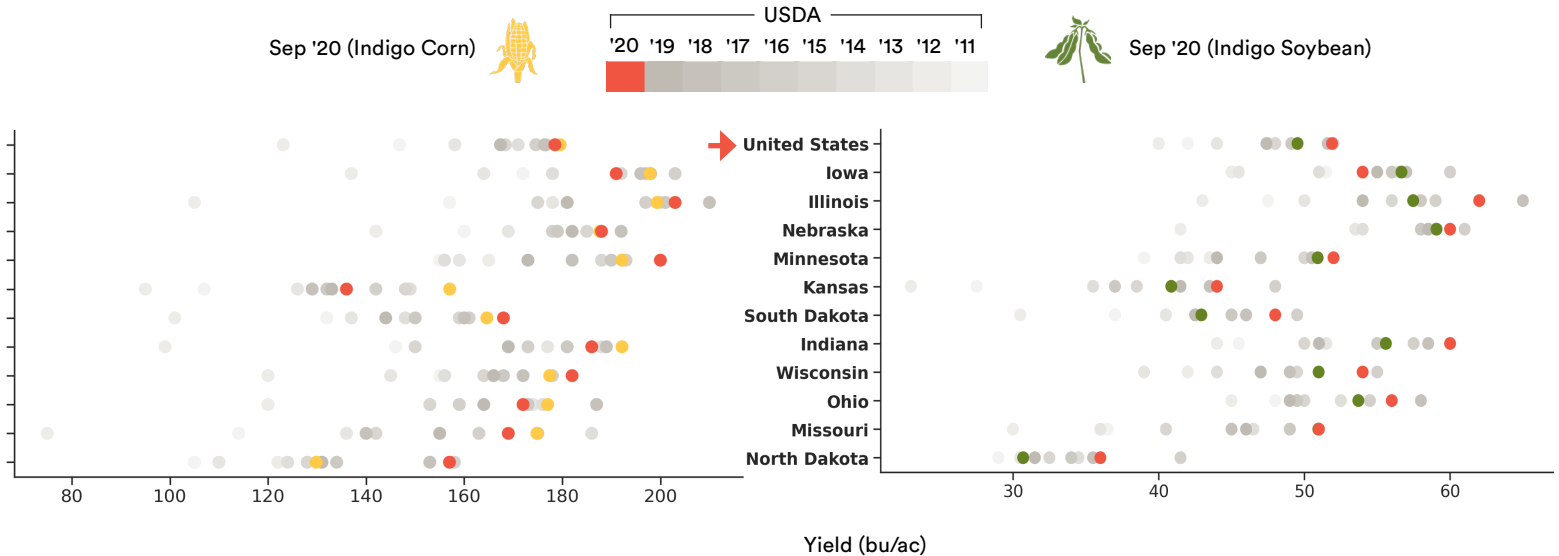


Since the August report, Indigo's forecast has decreased for US corn and soybean yields. Indigo's September forecast for end-of-season corn yield is 179.6 bushels per acre, 0.6% above USDA's September 11th estimate and Indigo's soybean estimate is at 49.5 bushels per acre, 4.6% below the USDA.



## Yield Estimates for Selected States

Nationally, Indigo still forecasts a record corn yield despite a decline from July. Soybean yields have also fallen back, but currently projected to be the 3rd best yield on record. USDA September 11th yield forecasts are shown in red on the chart below.

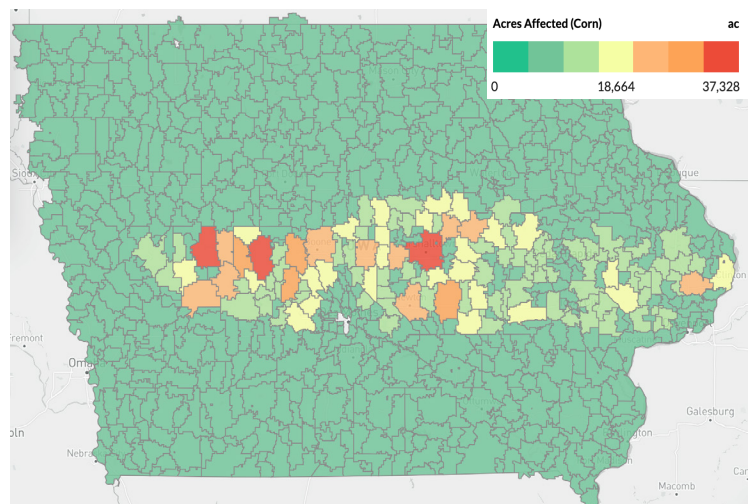


## Assessing the Derecho's Impact

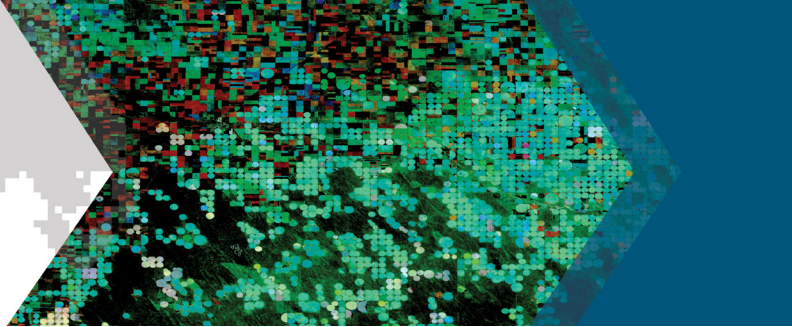
Indigo estimates approximately 2.1 million acres of corn and 1.4 million acres of soybeans were damaged in Iowa. These acres represent 85% of the total damage across the Heartland.

We estimated these damages using a multi-faceted analysis using dozens of in-field observations, and by correlating drone and airplane imagery taken after the event with before-and-after satellite radar signals.

Indigo's full report on the damage including county-by-county loss estimates is available here: [Iowa Derecho Special Report](#).



Crop Damage (% loss low-high)	Damaged Acres (m) (m)	Production Loss (m bu)		Damaged Acres (m) (m)	Production Loss (m bu)	
		Low	High		Low	High
Light: (10%-30%)	0.9	18.9	56.6	1.1	6.1	18.2
Moderate: (40%-60%)	0.6	45.7	68.6	0.2	4.5	6.7
Severe: (80%-100%)	0.6	94.9	118.7	0.1	4.8	6.0
<b>Total Damage/Losses</b>	<b>2.1</b>	<b>159.5</b>	<b>243.8</b>	<b>1.4</b>	<b>15.4</b>	<b>30.9</b>



These materials have been prepared by Indigo Ag. Inc. (“Indigo” or the “Firm”) personnel based on publicly available sources. These materials are not research reports and are not intended as such. These materials are provided for informational purposes only and are not otherwise intended as an offer to sell, or the solicitation of an offer to purchase, any commodity future, swap, security or other financial instrument. These materials contain preliminary information that is subject to change and that is not intended to be complete or to constitute all of the information necessary to evaluate the consequences of entering into a transaction and/ or investing in any financial instruments. These materials also include information obtained from sources believed to be reliable, but Indigo does not warrant their completeness or accuracy. In no event shall Indigo be liable for any use by any party of, for any decision made or action taken by any party in reliance upon, or for any inaccuracies or errors in, or omissions from, the information contained in these materials and such information may not be relied upon by you in evaluating the merits of participating in any transaction. All displayed quotes and rates are meant for informational purposes only. They are not to be relied upon to make any trades nor are they meant as a recommendation to participate in a particular trade. There is risk in trading and due diligence should be performed before executing any trades. Indigo makes no representation as to the accuracy of the data. Trades can only be made through an account at a registered broker/dealer or futures commission merchant. Indigo is neither a futures commission merchant nor a registered broker / dealer. Indigo is not a SEF. All projections, forecasts and estimates of returns and other “forward-looking” statements are based on assumptions, which are unlikely to be consistent with, and may differ materially from, actual events or conditions. Such forward-looking information only illustrates hypothetical results under certain assumptions. Actual results will vary, and the variations may be material. Nothing herein should be construed as an investment recommendation or as legal, tax, investment or accounting advice.