

**biotrinsic™**  
by indigo

**Soybean**

biotrinsic™ M34 WP  
+ biotrinsic™ N13 WD  
+ biotrinsic™ E13 WD



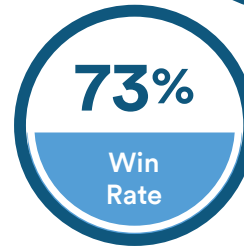
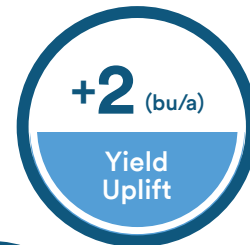
## Microbial Seed Treatment Plus Rhizobia Plant for Performance and Grow with Confidence



**SATISFACTION  
GUARANTEE**  
100% with replant policy.

### Benefits and Features - biotrinsic™ M34

- » Improves yield potential
- » Boosts tolerance to drought stress during flowering and grain fill
- » Improves rhizobium nodulation and nitrogen fixation
- » Improves water uptake efficiency and plant health in water-limited conditions
- » Provides 3 strains of rhizobium nodulation (N13) from ABM
- » Helps plants stay healthier under water stress
- » Helps reduce wilting by improving water use efficiency
- » Includes extender to support rhizobium stability



Average values from third-party research cooperators during 2019 (36 data points)



Untreated



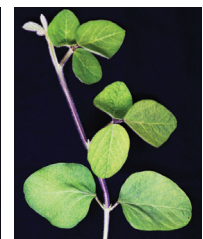
biotrinsic™



biotrinsic™



Untreated



biotrinsic™

### How it works

- » Drought: Improves water uptake efficiency and plant health under water-limited conditions
- » Increases microbial colonization in the root zone



*\*Product performance information based on third-party field trials. Results will vary across growers and farm operations. A number of variables may affect agronomic outcomes. Indigo does not make any representations, warranties or guarantees as to any specific results or outcomes. Product may not be available in all areas. Limitations, terms, and conditions apply.*

50 South B.B. King Blvd | Memphis, TN 38103 | (901) 250-5737 | info@indigoag.com | growbiotrinsic.com

**indigo**  
**BIOLOGICALS™**

### What makes biotrinsic™ different

biotrinsic™ consists entirely of endophytes. This means that it lives inside the plant and works from within the plant tissues. It doesn't just live in the soil. biotrinsic™ delivers a range of benefits throughout the season:

- Stress defense against drought and heat
- Greater efficiency of water use
- Nutrient use efficiency
- Hormone production to assist root and plant growth

### From Plants for Plants

biotrinsic™ comes from plants and is not discovered in a lab. It's an all naturally occurring microbe that has been extracted from plants thriving in stressful conditions. We isolate microbes that are abundant in plants that are thriving under stress while other plants around them are not. This allows us to tailor our products to a specific crop and set of stresses.

### Probiotics for Plants

By using endophytes, the plants have naturally selected to incorporate these into their own tissue. We apply them at a high concentration to maximize the benefit.

### Etymology -

	Active Ingredient	Host Crop	Host Tissue	Type
biotrinsic™ M34	<i>Bacillus subtilis</i>	Soybean	Seed	Endophyte
biotrinsic™ N13	<i>Bradyrhizobium japonicum</i>	Soybean	Seed	Endophyte

### Product details

Active Ingredients	Packaging	Application Rate	Case Treats
<i>Bacillus subtilis</i> 1.0 × 10 <sup>7</sup> CFU/g	5×2×40 units	1.35 fl oz/CWT (after dilution in mix tank slurry)	400 units or 56,000,000 seeds
+ <i>Bradyrhizobium japonicum</i> 1.0 × 10 <sup>10</sup> CFU/ml	400 Units	1.35 fl oz/CWT (after dilution in mix tank slurry)	400 units or 56,000,000 seeds

» 1 unit = 140,000 seeds = 50 lbs

\*Product performance information based on third-party field trials. Results will vary across growers and farm operations. A number of variables may affect agronomic outcomes. Indigo does not make any representations, warranties or guarantees as to any specific results or outcomes. Product may not be available in all areas. Limitations, terms, and conditions apply.