

PROGRAM GUIDE

biotrinsic

 **SATISFACTION
GUARANTEE**
100% with replant policy.

TABLE OF CONTENTS



ABOUT INDIGO.....	3
THE POWER OF BIOLOGICALS.....	4
PLANT WITH CONFIDENCE.....	5
THE SCIENCE.....	6
FLOWABLE POWDER BENEFITS.....	7
PRODUCT SUMMARY.....	8

CORN

‣ M33+M34.....	9
‣ W12.....	13
‣ W10.....	17
‣ X19 (Corn and Soybean)	21

SOYBEANS

‣ M34 + N13 + E13.....	25
‣ M34	29
‣ N13.....	33
‣ X14.....	37

COTTON

‣ WT29.....	41
-------------	----

CEREALS

‣ W13.....	45
‣ WN29.....	48
‣ M36.....	51
‣ X12.....	55

ABOUT INDIGO



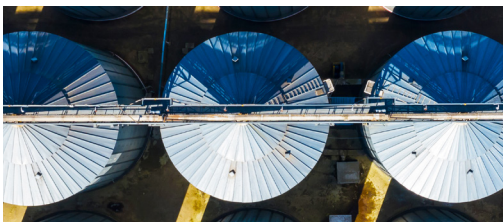
Indigo is leveraging science and technology to help improve the sustainability and profitability of the agriculture industry.

Indigo Ag leverages nature-based and digital technologies to improve the economic and environmental sustainability of the agriculture industry. The company's core offerings — biottrinsic®, Market+, and Carbon — integrate across the supply chain to optimize how the world's most impactful crops are produced, sourced, and distributed. Founded in 2013 with a mission to harness nature to help farmers sustainably feed the planet, Indigo enables a digital transition of the agriculture industry, connecting stakeholders across the agricultural ecosystem to unlock sustainability and profitability benefits for all.



biottrinsic®

biottrinsic® is a proprietary collection of microbes that are naturally occurring, not engineered in a lab. Our microbes are proven to increase yield and shield your crop from environmental stresses.



market+

Market+ is a digital merchandising application for the ag supply chain that increases efficiency, optimizes assets, and unlocks sustainably sourced contracts, to expand revenue opportunities



carbon™

Carbon is the industry's leading agricultural carbon credit program. With the demand for agricultural carbon sequestration growing rapidly, Indigo provides growers with the software and support necessary to produce and sell registry-issued, verified carbon credits at scale.

This document is produced for marketing/promotional purposes only. Indigo does not make any guarantees with respect to any outcomes of any Indigo product or service. A wide range of variables affect product performance, your results may vary. Products may not be available in all areas. [V1.A 12.01.22]

THE POWER OF BIOLOGICALS

Give your farmers a leading advantage with biottrinsic[®] by Indigo[®]

What if plants could naturally protect themselves against environmental stresses? When beneficial microbes are re-introduced into cropping systems in the form of seed coatings, we help empower just that activity. Wild crop ancestors possessed a microbiome that was more diverse than what is found in modern farming operations. By collecting plant samples globally and employing powerful bioinformatics tools, we have learned how to improve crop performance and stress tolerance through the re-introduction of beneficial microbes.



INDIGO AG IS A LEADER IN HARNESSING THE PLANT MICROBIOME

An impressive biological portfolio:

- >36,000 microbial strains collected, including >250 unique fungal genera and >350 unique bacterial genera
- >80 granted patents and >150 patents pending worldwide on microbial technologies
- Biologicals for 6 crops in production with positive yield uplifts vs. control:
 - Corn
 - Soybeans
 - Winter Wheat
 - Spring Wheat
 - Cotton
 - Cover Crops
- With innovation focused on predominant row crop abiotic and biotic stressors that limit yield:
 - Nutrient use efficiency
 - Nematodes
 - Soilborne seedling diseases
 - Weather stressors like drought and heat



Fully committed to addressing farmers' most pressing challenges:

- Multiple R&D facilities always innovating to bring the best products to farmers throughout the world
- Thousands of microbes evaluated each year to find the ones that work best in each region, crop, and environmental stress
- Global presence across 4 continents
- Used by thousands of farmers and sold at hundreds of ag retailers

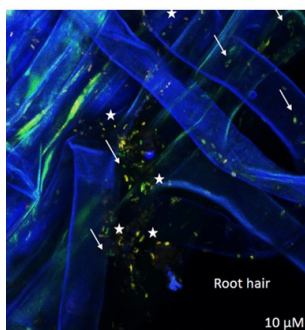
This document is produced for marketing/promotional purposes only. Indigo does not make any guarantees with respect to any outcomes of any Indigo product or service. A wide range of variables affect product performance, your results may vary. Products may not be available in all areas. [V1.A 12.01.22]

PLANT WITH CONFIDENCE

biotrinsic® products:

- Have been developed and scaled in multiple formulation types that provide bulk stability for >1 year
- Stable on seeds under relevant storage conditions and competitive timelines
- Compatible with common seed applied insecticides and fungicides
- Have each been tested using hoppers, augers, conveyors, and more to optimize application rate
- Work from the moment the seed is planted
- Deliver results visible under the microscope, on the ground, and from space:

UNDER THE MICROSCOPE



Wheat root colonization; yellow + star: Indigo beneficial microbes

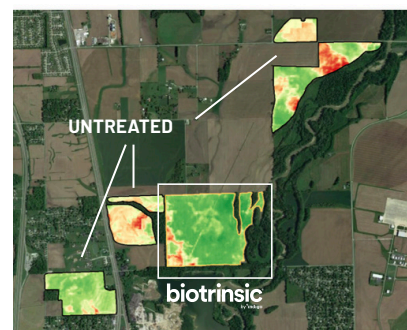
ON THE GROUND



UNTREATED

biotrinsic

FROM SPACE



Crop Health Key ■ GOOD ■ BAD



Our farmers are looking for options like biotrinsic® so they can feel confident starting the season. We've seen strong performance from these biologicals on our demo plots – the crops produced are healthier and more resilient. It's been great to partner with Indigo, and we're excited to see the portfolio continue to grow.

George Harris

CO-OWNER OF XCELERATION AG,
ILLINOIS

We had tried various biologicals in the past with no consistent yield advantages for our customers. We trialed biotrinsic® this year and could see differences from the start in early seed vigor and bigger roots. We were impressed to see yield advantages across multiple counties and growing conditions. It seems to be a very consistent product adding and protecting yield through various environments.

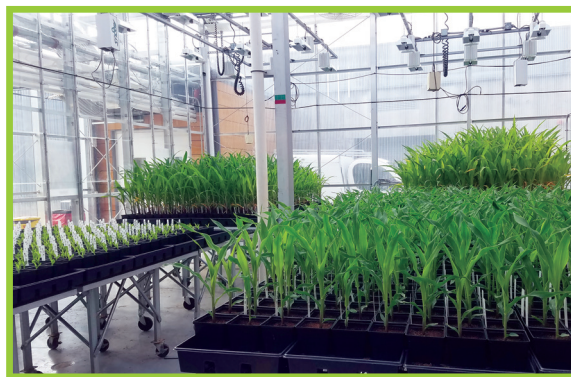
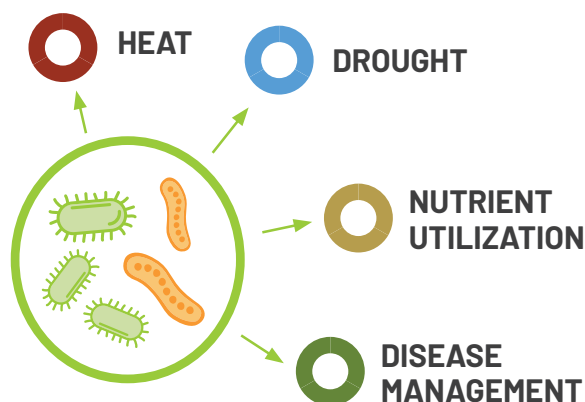
Brooks Horn

SWEETWATER CREED SEEDS,
NORTH CAROLINA

THE SCIENCE BEHIND THE DIFFERENCE

Microbiomes, or communities of microbes, help maintain internal processes for all living things – Indigo focuses on identifying microbes that have evolved in conjunction with plants over time to optimize their health and maximize their productivity.

At Indigo, we identify which of these microbes are most beneficial to a plant's health through the application of algorithms and machine learning. We further prove their performance at our research laboratories and greenhouses in Boston, Massachusetts, and Research Triangle Park, North Carolina along with extensive field trials throughout the United States. Our resulting seed treatment products complement a plant's natural process to improve health and development across each phase of life, while boosting crop yields.



What makes **biottrinsic**® different?

More Beneficial for Your Crop

Microbes are selected to address the key stresses that limit crop yield potential. This allows you to select the right biottrinsic® products based on the stresses that have the greatest impact on your farm.

From Plants for Plants

biottrinsic® is a collection of over 30,000 naturally occurring microbial strains that have been extracted from plants thriving in stressful conditions. We isolate microbes that are abundant in plants that are thriving under stress while other plants around them are not. This allows us to produce products to a specific crop and set of stresses.

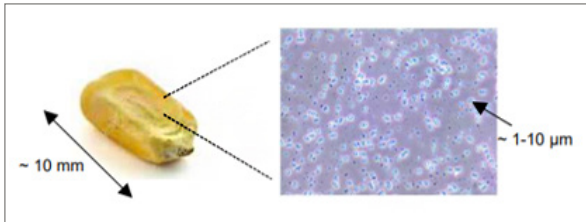
FLOWABLE POWDER BENEFITS

Why does so little biottrinsic® products treat so much seed?

Unlike other products that “paint” each seed kernel completely with a chemical, biottrinsic® seed treatments just need a few microbes to colonize each seeds’ roots and create improved crop performance, especially under stressful conditions.



- 5 oz scoop at 1 vol oz / CWT: Contains more than 10 billion microbes

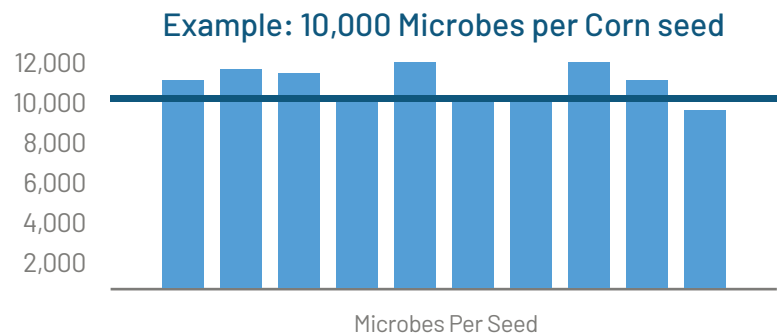


- A corn kernel is about .4 inches / 10 mm
- biottrinsic® seed treatments are about .0004 in/.01 mm long



OUR GOAL: The Right Microbes For Every Crop

biottrinsic® by Indigo® researchers do extensive research with various seed treatment and application methods to match dosage to the target crop. For example, a small cover crop seed would have a different dosage than a large corn kernel.



Reference: <https://www.frontiersin.org/articles/10.3389/fpls.2017.01147/full>



This document is produced for marketing/promotional purposes only. Except for the Grower Satisfaction Guarantee as expressly described, Indigo does not make any representations, warranties or guarantees with respect to any outcomes of any Indigo product or service. Results will vary across growers and farm operations. A wide range of variables may affect agronomic outcomes. Product may not be available in all areas. [V1.A 12.01.22]

PRODUCT SUMMARY

BIOLOGICAL SEED TREATMENT



**SATISFACTION
GUARANTEE**
100% with replant policy.

CROP	PRODUCT NAMES	BEST USED FOR	PROVEN RESULTS
CORN	biotrinsic® M33 + M34 FP	Drought and heat tolerance; Nitrogen uptake utilization	+17 lbs/acre (up to +42 lbs) avg nitrogen uptake
	biotrinsic® W10 FP	Drought protection during grain fill	+4.3 bu/acre avg uplift
	biotrinsic® W12 FP	Drought protection during flowering and grain fill ; Increased root mass and length	+4.5 bu/acre avg uplift
CORN+SOY	 biotrinsic® X19 FP	Biological fungicide to manage key seedling diseases with triple mode of actions; Bioblocker™ action forms a microbial wall of defense	<i>Fusarium</i> spp., <i>Pythium</i> spp., <i>Rhizoctonia</i> spp.
SOYBEAN	biotrinsic® M34 FP OR WP	Drought and heat tolerance; Increased root and leaf nitrogen	+2 bu/acre avg uplift
	biotrinsic® N13 WD + E13 WD	Nitrogen uptake and utilization; 3-strain rhizobium Polymer reduces skips and doubles	More efficient than older strains Patented herbicide tolerant
	 biotrinsic® M34 WP + N13 WD + E13 WD	Drought and heat tolerance; Increased root and leaf nitrogen; Nitrogen uptake and utilization; 3 strain rhizobium; Polymer reduces skips and doubles	+2 bu/acre avg uplift Rhizobium more efficient and herbicide tolerant
	biotrinsic® X14 WD	Increased plant vigor and consistent germination SDS control with no phytotox on the cotyledons Better control of Rhizoctonia than ILEVO® No "Halo Effect"	SDS control and Rhizoctonia control
COTTON	biotrinsic® WT29 FP	Drought and heat tolerance; Potassium uptake and utilization	+34 lbs/acre avg yield uplift
SPRING WHEAT	biotrinsic® W13 FP OR WD	Drought and heat tolerance; Increased root mass and length	+4 bu/acre avg uplift
COVER CROPS	biotrinsic® W13 FP OR WD	Drought tolerance; Increased root mass and length	Up to 40% yield uplift
WINTER WHEAT	biotrinsic® M36 FP OR WP	Drought and heat tolerance; Phosphorus and Potassium uptake and utilization	+4 bu/acre avg uplift +12% head producing tillers
	biotrinsic® WN29 FP	Sulfur uptake and utilization; drought and heat tolerance; Increased root mass and length	+3 bu/acre avg uplift
	biotrinsic® W13 FP OR WD	Drought tolerance; Increased root mass and length	+3 bu/acre avg uplift
	biotrinsic® X12 WD	Seedling diseases; biofungicide	+3 bu/acre avg uplift Fusarium and Rhizoctonia control

Indigo does not guarantee any specific outcomes. A wide range of variables affect product performance, your results may vary. Additional terms, conditions and limitations may apply. Product may not be available in all areas. [V1.A 12.01.22]

50 South B.B. King Blvd | Memphis, TN 38103 | (901) 250-5737 | biotrinsic@indigoag.com | growbiotrinsic.com

biotrinsic

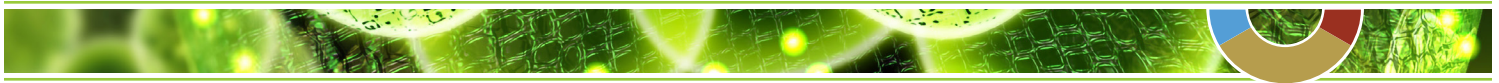


Corn

PRODUCT INFORMATION

biottrinsic

 **SATISFACTION
GUARANTEE**
100% with replant policy.



Corn

biottrinsic® M33 + M34

Indigo's Biological Seed Treatment

Plant for Performance and Grow with Confidence

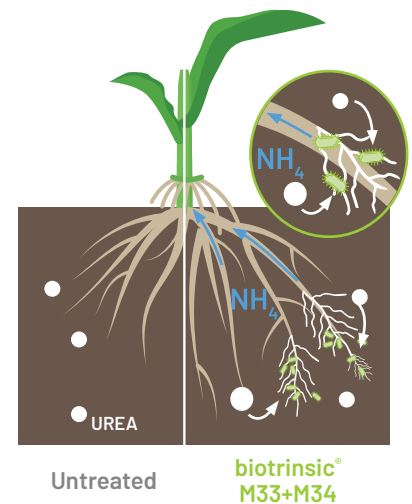
biottrinsic® M33+M34 is a combination of two live microbes that allow the corn plant to better utilize nitrogen while helping to protect it from yield robbing stress. These microbes work directly with the roots providing nitrogen that would otherwise be unused in the soil.

2 NEW BREAKTHROUGH TECHNOLOGIES COMBINED TO INCREASE NUTRIENT UPTAKE IN STRESSFUL CONDITIONS

What if your corn could spend less energy acquiring and converting nitrogen and use that energy to improve yield?

After all, nitrogen is the most important and expensive nutrient for corn growth and yield.

- biottrinsic® M33+M34 adheres directly to the seed and begins to work the moment you plant it in the soil to start acquiring and converting urea into ammonia the plant can use.
- It provides an average of 17 lbs nitrogen and up to an increase of 42 lbs. A yield increase of 5 bushels has also been observed providing greater return on your nitrogen investment.



FEATURES AND BENEFITS

- The combination of these two live microbes form a symbiotic relationship with the plant to provide enhanced nitrogen uptake by facilitating the conversion of urea to ammonium for greater plant uptake, growth, and yield.
- Has been shown to improve the root volume and surface area allowing for greater nutrient and water mining.
- Improved drought and heat tolerance that leads to increased yields.
- By applying it directly to the seed the microbes adhere to the roots where they start to work immediately supporting plant health and nutrition. You don't have to worry about weather events stripping away your investment.
- Easy to use flowable formulation which improves seed flowability and can be applied directly in the planter box, pro box, mini bulk, or seed tender.

17lbs
Nitrogen

Average lbs of Nitrogen with a maximum of 42 lbs observed with biottrinsic® M34

+4
bu/a

Average Yield Uplift with biottrinsic® M34

*Product performance information based on third-party field trials. Results will vary across growers and farm operations. A number of variables may affect agronomic outcomes. Indigo does not make any representations, warranties or guarantees as to any specific results or outcomes. Product may not be available in all areas. Limitations, terms, and conditions apply. [V1.A 12.01.22]

50 South B.B. King Blvd | Memphis, TN 38103 | (901) 250-5737 | biottrinsic@Indigoag.com | growbiottrinsic.com

biottrinsic®



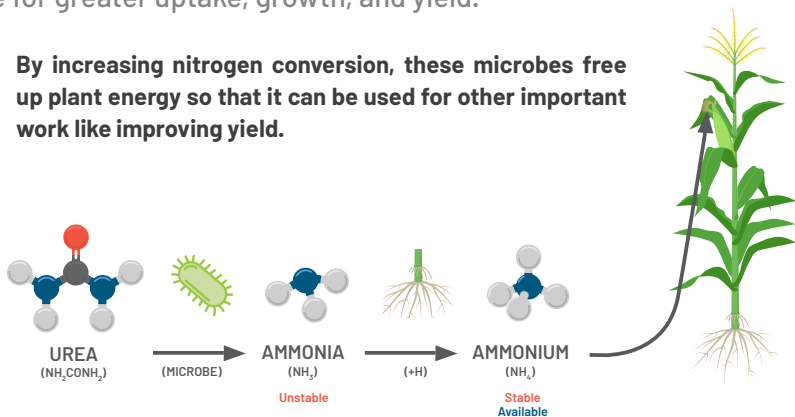
Corn

biotrinsic® M33 + M34

HOW IT WORKS

biotrinsic® M33 + M34 microbes have been shown to help bridge the gap between soil nitrogen and plant nitrogen. They seek out soil nitrogen and improve the conversion of soil nitrogen into the most stable and desired form the plant can use for greater uptake, growth, and yield.

By increasing nitrogen conversion, these microbes free up plant energy so that it can be used for other important work like improving yield.



Untreated

biotrinsic® M33+M34

PRODUCT DETAILS

CAN BE USED ON

- Fields where nitrogen deficiencies have limited yields in the past.
- Fields where nitrogen may be adjusted to save costs.
- Fields where nitrogen loss is a concern or issue.
- Dryland fields where rain fed crops are limited by moisture.
- Crops that are planted in an ideal or late planting window.
- Irrigated fields where irrigation is limited in the amount of water that can be applied or efficiency of applied water.
- Fields where elevation changes make water infiltration into the soil profile difficult.
- Fields where soil texture limits water holding capacity.
- All corn hybrids and traits.

HOW TO USE IT

- Can be applied to corn seed at any time in the pro box, mini bulk bag, seed tender, or planter hopper (always follow recommended on seed stability guidelines).
- The low use rate allows additional room on the seed so it can be applied with other products like talc and graphite due to its low use rate.
- The low dust formulation allows it to be used with equipment and operators where dust off is a problem.
- No expensive additional equipment is needed to apply and it can be used with any planter.
- By applying it directly to the seed, the microbes are adhered to the roots where it starts to work immediately supporting plant health and nutrition. You don't have to worry about weather events stripping away your investment.

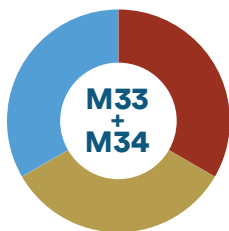
Pkg Treats	Pkgs/ Case	Case	Case Treats	Unit Measures
20 units	5	5x1x20	100 units	50 lbs
50 units	5	5x1x50	250 units	50 lbs

Application Rate: 1.0 vol oz / CWT



- Application on the seed creates an immediate team between microbes and plants positively improving plant and root growth with no wasted time. Our seed treatment starts working the moment you plant because it's on the corn seed. With other in-furrow treatments on the market, the roots must grow to the treatment which could take many days.
- 15 days on-seed stability provides the flexibility you need during the planting season.
- Broad chemical compatibility so it can be used with your existing treatments. Always reference the Indigo Ag compatibility guide.

*Product performance information based on third-party field trials. Results will vary across growers and farm operations. A number of variables may affect agronomic outcomes. Indigo does not make any representations, warranties or guarantees as to any specific results or outcomes. Product may not be available in all areas. Limitations, terms, and conditions apply. [V1.A 12.01.22]



COMPATIBILITY REFERENCE SHEET

biotrinsic



**SATISFACTION
GUARANTEE**
100% with replant policy.

APPROVED SEED TREATMENT PACKAGES

Indigo's proprietary collection of seed treatments powered by the world's beneficial microbes contains live organisms that could be harmed by some commercially available seed treatments. The following treatment packages have been reviewed by Indigo for compatibility and can be safely used in conjunction with biotrinsic[®] by Indigo[®] biological products. Use of other seed treatments not listed below could risk damage to the Indigo microbes and negatively impact product performance. Please consult with Indigo if there are questions on compatibility of specific seed treatments.

Corn - biotrinsic[®] M33 + M34 FP

APPROVED SEED TREATMENTS	PLANTING WINDOW (DAYS)
Untreated	15
Acceleron [®]	15
Apron XL [®]	15
Avipel [®] Liquid	15
Cruiser [®] 5FS	15
CruiserMaxx [®] 250	15
Escalate [®] Nemasect	15
Intego [®] Solo	15
Lumigen (Lumivia [®] + Lumisure)	15
Lumigen Base	15
Lumigen Base + Poncho/Votivo [®] 1250	15
Maxim [®] 4FS	15
Nipsit Inside [®]	15
Resonate [®]	15
Soilbiotics 1R	15

After applying the Indigo microbial product onto the seed, it is recommended to plant the Indigo treated seed within the planting window listed for optimum results.

Please contact Indigo at (901) 250-5737

if your chemistry is not on this list, or if you have any questions regarding this product and its compatibility.

Growers are solely responsible for understanding and abiding by all applicable current:

(i) product use label directions, including restrictions for use; and (ii) federal, state and/or local regulations regarding the use of such product(s). Indigo disclaims any and all liability in connection with such grower obligations and practices.

This document is produced for marketing/promotional purposes only. Except for the Grower Satisfaction Guarantee as expressly described, Indigo does not make any guarantees with respect to any outcomes of any Indigo product or service. A wide range of variables affect product performance, your results may vary. Product may not be available in all areas. Registered trademarks are the property of their respective owners, and are used here for identification purposes only. [V1.A 12.01.22]

50 South B.B. King Blvd | Memphis, TN 38103 | (901) 250-5737 | biotrinsic@indigoag.com | growbiotrinsic.com





Corn

PRODUCT INFORMATION

biottrinsic

 **SATISFACTION
GUARANTEE**
100% with replant policy.

Indigo's Biological Seed Treatment

Plant for Performance and Grow with Confidence

biotrinsic® W12

biotrinsic® W12 is a powerful combination of two live microbes that enhance drought protection during the critical flowering and grain fill stages. These microbes work with the corn plant to optimize root growth and help improve the amount of water the plant can take in and use.

EFFECTS OF DROUGHT ON EAR DEVELOPMENT



How often do you experience leaf rolling and tip back in your corn due to drought stress?

Drought stress during critical stages is becoming more common leading to decreased yields. What if there was a product that could help your corn plant withstand drought stress during the critical flowering and reproductive stages?

- biotrinsic® W12 starts working from the moment you plant the seed and works from the roots to the shoots all season long to prepare the plant to better withstand the stress of leaf rolling, tip back, and yield loss.
- When drought hits at the worst time possible, make sure your corn is protected with biotrinsic® W12.

By the time leaf rolling is visible, the plant has already reduced its photosynthesis and you've lost a day of yield.

- biotrinsic® W12 is comprised of two live microbes that form a symbiotic relationship with the plant to help provide drought protection through flowering and grain fill maximizing the potential of a greater return on your investment.
- Improved drought tolerance that leads to increased yields.
 - Flowering and grain fill are two critical growth stages when more than 1/3 of the corn plant's water use occurs.
 - Research spanning 3 years showed an increase in tolerance to drought stress during grain fill and 2 years it showed during flowering.
- 5 trial years of testing with biotrinsic® W12 components across the corn belt.
- Easy to use flowable formulation improves seed flowability and can be applied in the planter box, pro box, mini bulk, or seed tender.

Increased Shoot Volume under drought stress

Making the most of every day from the time you plant the seed is important to maximizing your yield. biotrinsic® W12 starts working from the moment that seed is planted and on average we see a 12% increase under drought stress in shoot volume after emergence with bacillus simplex. That means it is improving the plant's ability to optimize yield throughout the rest of the season.

+12%

Shoot volume under drought with bacillus simplex

+4.5

Drought stress during flowering and grain fill

*Product performance information based on third-party field trials. Results will vary across growers and farm operations. A number of variables may affect agronomic outcomes. Indigo does not make any representations, warranties or guarantees as to any specific results or outcomes. Product may not be available in all areas. Limitations, terms, and conditions apply. [V1.A 12.01.22]

50 South B.B. King Blvd | Memphis, TN 38103 | (901) 250-5737 | biotrinsic@Indigoag.com | growbiotrinsic.com

biotrinsic®

CONSISTENT YIELD ADVANTAGES

biotrinsic® W12 has proven to consistently generate improved yield response. We have studied the two active ingredients over the past 3 years and have combined them to improve drought tolerance. When you experience drought during flowering and grain fill W12 helps protect your yield, but if you don't experience it your crop can still see a potential yield uplift.

	No Stress	Drought Stress
biotrinsic® W12 <i>Coniochaeta nivea</i> + <i>Bacillus simplex</i>	0.91 bu/a	4.5 bu/a flowering and grain fill
	1 year average	
<i>Coniochaeta nivea</i>	1.01 bu/a	6.3 bu/a grain fill
	2 year average	
<i>Bacillus simplex</i>	0.95 bu/a	2.9 bu/a grain fill
	3 year average	

PRODUCT DETAILS

CAN BE USED ON

- Dryland fields where rain fed crops are limited by moisture.
- Irrigated fields where irrigation is limited in amount of water that can be applied or efficiency of applied water.
- Fields where elevation changes make water infiltration into the soil profile difficult.
- Fields where soil texture limits water holding capacity.
- Crops that are planted in an ideal or late planting window.
- All corn hybrids and traits, including hybrids with drought technology.

Pkg Treats	Pkgs/ Case	Case	Case Treats	Unit Measures
20 units	5	5x1x20	100 units	50 lbs
50 units	5	5x1x50	250 units	50 lbs

FP Application Rate: 1 vol oz/CWT



HOW TO USE IT

- Can be applied to corn seed at any time in the pro box, mini bulk bag, seed tender, or planter hopper (always follow recommended on seed stability guidelines).
- The low use rate allows additional room on the seed so it can be applied with other products like talc and graphite due to its low use rate.
- The low dust formulation allows it to be used with equipment and operators where dust off is a problem.
- No expensive additional equipment is needed to apply and it can be used with any planter.
- Application to the seed, creates an immediate team between microbes and plants positively improving plant and root growth with no wasted time. Our seed treatment starts working the moment you plant because it's on the corn seed. With other in-furrow treatments on the market, the roots must grow to the treatment which could take many days.
- 90 days on-seed stability provides the flexibility you need during the planting season.
- Broad chemical compatibility so it can be used with your existing treatments. Always reference Indigo's compatibility guide.
- By applying it directly to the seed the microbes adhere to the roots where it starts working immediately supporting plant health and nutrition. You don't have to worry about weather events stripping away your investment.

*Product performance information based on third-party field trials. Results will vary across growers and farm operations. A number of variables may affect agronomic outcomes. Indigo does not make any representations, warranties or guarantees as to any specific results or outcomes. Product may not be available in all areas. Limitations, terms, and conditions apply. [V1.A 12.01.22]

50 South B.B. King Blvd | Memphis, TN 38103 | (901) 250-5737 | biotrinsic@Indigoag.com | growbiotrinsic.com

biotrinsic®



COMPATIBILITY REFERENCE SHEET



**SATISFACTION
GUARANTEE**
100% with replant policy.

APPROVED SEED TREATMENT PACKAGES

Indigo's proprietary collection of seed treatments powered by the world's beneficial microbes contains live organisms that could be harmed by some commercially available seed treatments. The following treatment packages have been reviewed by Indigo for compatibility and can be safely used in conjunction with biotrinsic® by Indigo® biological products. Use of other seed treatments not listed below could risk damage to the Indigo microbes and negatively impact product performance. Please consult with Indigo if there are questions on compatibility of specific seed treatments.

Corn - biotrinsic® W12 FP

APPROVED SEED TREATMENTS	PLANTING WINDOW (DAYS)
Untreated	45
Acceleron®	45
CruiserMaxx® 250	45
Lumigen Base	45

After applying the Indigo microbial product onto the seed, it is recommended to plant the Indigo treated seed within the planting window listed for optimum results.

Please contact Indigo at (901) 250-5737

if your chemistry is not on this list, or if you have any questions regarding this product and its compatibility.



Growers are solely responsible for understanding and abiding by all applicable current:

(i) product use label directions, including restrictions for use; and (ii) federal, state and/or local regulations regarding the use of such product(s). Indigo disclaims any and all liability in connection with such grower obligations and practices.

This document is produced for marketing/promotional purposes only. Except for the Grower Satisfaction Guarantee as expressly described, Indigo does not make any guarantees with respect to any outcomes of any Indigo product or service. A wide range of variables affect product performance, your results may vary. Product may not be available in all areas. Registered trademarks are the property of their respective owners, and are used here for identification purposes only. [V1.A 12.01.22]

50 South B.B. King Blvd | Memphis, TN 38103 | (901) 250-5737 | biotrinsic@indigoag.com | growbiotrinsic.com





W10

Corn

PRODUCT INFORMATION

biottrinsic



**SATISFACTION
GUARANTEE**
100% with replant policy.

Indigo's Biological Seed Treatment

Plant for Performance and Grow with Confidence

Corn
biotrinsic® W10

biotrinsic® W10 enhances drought protection during the critical grain fill stage working with the corn plant to optimize root growth and help improve the amount of water the plant can take in and use.

biotrinsic® W10 forms a symbiotic relationship with the plant to help provide drought protection during grain fill maximizing the potential of a greater return on your investment.

Improved drought tolerance that leads to increased yields.

- Managing drought stress is a proactive strategy and starts the moment you plant your seed.
- Grain fill is a critical growth stage and by the time drought occurs you've already lost yield. Tip back isn't always visible until it's too late. Be proactive in protecting your crop and make sure it's ready if drought hits.
- Research spanning 3 years showed an increase in tolerance to drought stress during grain fill.

Easy to use flowable formulation which also improves seed flowability and can be applied directly in the planter box, pro box, mini bulk, or seed tender.

+4.3

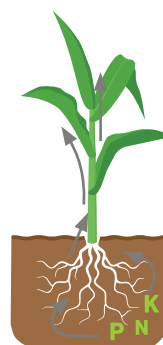
Avg bu/a

Drought stress
during grain fill

3

years

Field data



Lab data under water deficit

N NITROGEN
+4.2%N

P PHOSPHORUS
+6.4%P

K POTASSIUM
+5.1%K

PROMOTES INCREASED ROOT AND PLANT GROWTH



Untreated biotrinsic® W10



Untreated biotrinsic® W10

INCREASED SHOOT VOLUME UNDER DROUGHT STRESS

Making the most of every day from the time you plant the seed is important to maximizing your yield. biotrinsic® W10 starts working from the moment that seed is planted and on average we see a 12% increase under drought stress in shoot volume after emergence with bacillus simplex. That means it is improving the plant's ability to optimize yield throughout the rest of the season.

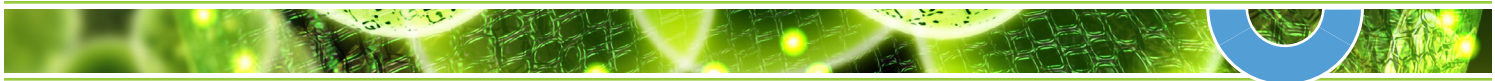
+12%

Shoot volume
under drought with
bacillus simplex

*Product performance information based on third-party field trials. Results will vary across growers and farm operations. A number of variables may affect agronomic outcomes. Indigo does not make any representations, warranties or guarantees as to any specific results or outcomes. Product may not be available in all areas. Limitations, terms, and conditions apply. [V1.A 12.01.22]

50 South B.B. King Blvd | Memphis, TN 38103 | (901) 250-5737 | biotrinsic@Indigoag.com | growbiotrinsic.com

biotrinsic®



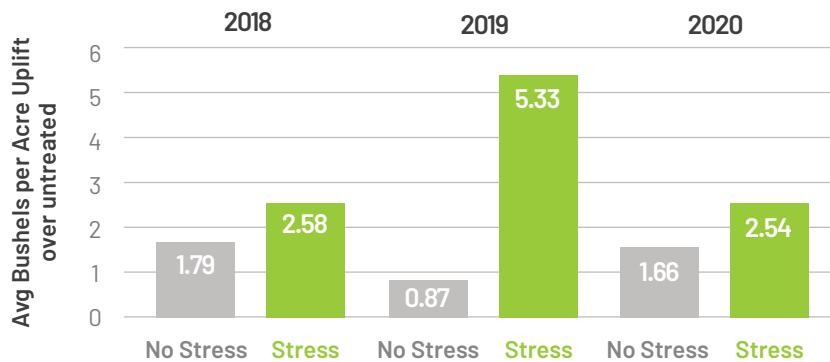
Corn

biotrinsic® W10

CONSISTENT YIELD ADVANTAGES

biotrinsic® W10 has proven to consistently generate an improved yield response. In trials spanning **3 years**, W10 delivered an increase of as much as **5.3 bushels** per acre, showing the best performance in low yielding environments with drought stress.

biotrinsic® W10 - 3 Year Avg Uplift
under stress and no stress conditions



When you experience drought during grain fill, W10 helps to protect your yield, but if you don't experience drought stress your crop can still see a potential benefit.



Untreated

biotrinsic® W10



Untreated

biotrinsic® W10



Untreated

biotrinsic® W10

HOW TO USE IT

- Can be applied to corn seed at any time in the pro box, mini bulk bag, seed tender, or planter hopper (always follow recommended on seed stability guidelines).
- The low use rate allows additional room on the seed so it can be applied with other products like talc and graphite due to its low use rate.
- 365 days on-seed stability provides the flexibility you need during the planting season.

Pkg Treats	Pkgs/Case	Case	Case Treats	Unit Measures
20 units	5	5x1x20	100 units	50 lbs
50 units	5	5x1x50	250 units	50 lbs

FP Application Rate: 1 vol oz/CWT



*Product performance information based on third-party field trials. Results will vary across growers and farm operations. A number of variables may affect agronomic outcomes. Indigo does not make any representations, warranties or guarantees as to any specific results or outcomes. Product may not be available in all areas. Limitations, terms, and conditions apply. [V1.A 12.01.22]

50 South B.B. King Blvd | Memphis, TN 38103 | (901) 250-5737 | biotrinsic@Indigoag.com | growbiotrinsic.com

biotrinsic®



COMPATIBILITY REFERENCE SHEET



**SATISFACTION
GUARANTEE**
100% with replant policy.

APPROVED SEED TREATMENT PACKAGES

Indigo's proprietary collection of seed treatments powered by the world's beneficial microbes contains live organisms that could be harmed by some commercially available seed treatments. The following treatment packages have been reviewed by Indigo for compatibility and can be safely used in conjunction with biottrinsic® by Indigo® biological products. Use of other seed treatments not listed below could risk damage to the Indigo microbes and negatively impact product performance. Please consult with Indigo if there are questions on compatibility of specific seed treatments.

Corn - biottrinsic® W10 FP

APPROVED SEED TREATMENTS	PLANTING WINDOW (DAYS)
Untreated	365
Accelaron®	365
Accelaron® B-300 SAT	365
Apron XL®	365
Avipel® Liquid	365
Cruiser® 5FS	365
CruiserMaxx® 250	365
Escalate® Nemasect	365
Intego® Solo	365
Lumigen (Lumivia® + Lumisure)	365
Lumigen Base	365
Lumigen Base + Poncho/Votivo 1250	365
Maxim® 4FS	365
Nemastrike®	365
Nipsit Inside®	365
Resonate®	365
Soilbiotics 1R	365

After applying the Indigo microbial product onto the seed, it is recommended to plant the Indigo treated seed within the planting window listed for optimum results.

Please contact Indigo at (901) 250-5737

if your chemistry is not on this list, or if you have any questions regarding this product and its compatibility.

Growers are solely responsible for understanding and abiding by all applicable current:

(i) product use label directions, including restrictions for use; and (ii) federal, state and/or local regulations regarding the use of such product(s). Indigo disclaims any and all liability in connection with such grower obligations and practices.

This document is produced for marketing/promotional purposes only. Except for the Grower Satisfaction Guarantee as expressly described, Indigo does not make any guarantees with respect to any outcomes of any Indigo product or service. A wide range of variables affect product performance, your results may vary. Product may not be available in all areas. Registered trademarks are the property of their respective owners, and are used here for identification purposes only. [V1.A 12.01.22]

50 South B.B. King Blvd | Memphis, TN 38103 | (901) 250-5737 | biottrinsic@indigoag.com | growbiottrinsic.com





X19

Biofungicide

for Corn and Soybean Crops

PRODUCT INFORMATION

biottrinsic



**SATISFACTION
GUARANTEE**
100% with replant policy.



Biofungicide

biotrinsic® X19

Indigo's Biological Seed Treatment

Plant for Performance and Grow with Confidence

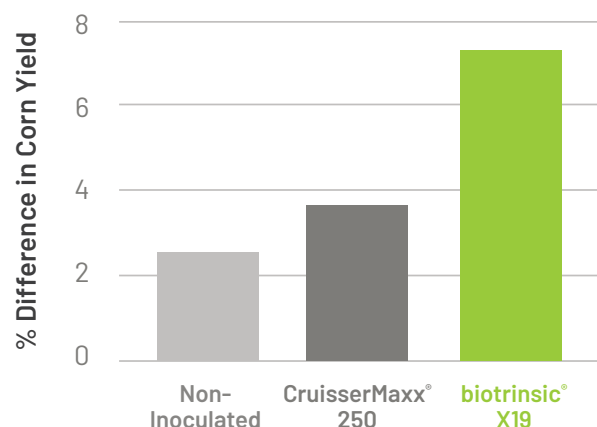
biotrinsic® X19 FP, a breakthrough biological fungicide that sets an uncompromising new standard for managing key seedling diseases in corn and soybean and maximizing plant performance. Working in harmony with natural plant defenses, triple modes of action combine to form an expansive zone of disease protection.

FEATURES AND BENEFITS

biotrinsic® X19 for corn and soybeans offers:

- Uncompromising seedling disease management:**
Effective in managing key seedling diseases found in corn and soybeans. (*Fusarium* spp., *Pythium* spp., *Rhizoctonia* spp.)
- Ease of application:**
This Flowable Powder (FP) formulation can be easily applied to seed at the time of planting without restriction on the type of drill or planter.
- Compatibility with other seed treatments:**
Compatible with a wide range of pesticide treatment products to improve and strengthen the spectrum of disease intervention and give farmers the flexibility to design effective crop protection plans based on their specific field conditions.
- Optimized resistance management:**
Can be used alone or combined with existing non-biological fungicide seed treatments to forestall or overcome the development or progression of disease resistance.
- Flexibility for use:**
 - Can be applied to corn or soybeans, lowering the risk of purchasing unneeded product.
 - Reviewed by the Organic Materials Review Institute (OMRI) and now available for use as a seed treatment on organic certified farming operations as well as on conventional or non-organic farms.

2019 FIELD TRIAL



+7.4%

Yield Uplift

+8.6

bu/a Yield Uplift

- » 2019 field testing on corn using seed inoculated with a complex of *Fusarium* spp., *Pythium* spp., and *Rhizoctonia* spp. – Auburn University
- » biotrinsic® X19 out-performed CruiserMaxx® with a yield uplift of 7.4% for an increase of 8.6 bu/a

*Product performance information based on third-party field trials. Results will vary across growers and farm operations. A number of variables may affect agronomic outcomes. Indigo does not make any representations, warranties or guarantees as to any specific results or outcomes. Product may not be available in all areas. Limitations, terms, and conditions apply. [V1.A 12.01.22]

50 South B.B. King Blvd | Memphis, TN 38103 | (901) 250-5737 | biotrinsic@Indigoag.com | growbiotrinsic.com

biotrinsic®

HOW IT WORKS

Although biotrinsic® X19 has only one active ingredient, it combines multiple **modes of action** to empower and enhance natural plant defenses against key seedling diseases:

- Induced Systemic Resistance (ISR):**
 Through Induced Systemic Resistance (ISR), X19 empowers natural disease defense mechanisms by enhancing biochemical and biophysical actions within the plant to defend against attack from key seedling disease pathogens.
- Root Colonization:**
 The product's microbes are living organisms that grow in harmony with plants, colonizing their roots and expanding the zone of disease intervention as the roots grow.
- Bioblocker™ action:**
 When the microbes encounter mycelium or hyphae of targeted seedling disease pathogens, they rapidly surround the mycelium using Bioblocker™ action to form a microbial wall of separation between plant roots and the seedling disease, interfering with disease transference.

PRODUCT DETAILS

CAN BE USED ON

- All farming operations, including organic farms.
- Dryland or Irrigated fields.
- Corn and soybean seeds within 15 days of planting.
- All corn and soybean varieties and traits.

HOW TO USE IT

- Apply to seed within 15 days of planting.
- Flowable powder formulation for easy application to seed at the time of planting.
- Can be applied over existing seed care treatments or to untreated seeds.
- Minimum shelf life of 1 year.
- Low use rate 1.00 fl oz./cwt.



Pkg Treats	Pkgs/ Case	Case	Case Treats	Unit Measures
50 units	5	5x1x50	250 units	50 lbs

FP Application Rate: 1.00 fl oz./CWT

*Product performance information based on third-party field trials. Results will vary across growers and farm operations. A number of variables may affect agronomic outcomes. Indigo does not make any representations, warranties or guarantees as to any specific results or outcomes. Product may not be available in all areas. Limitations, terms, and conditions apply. [V1.A 12.01.22]

50 South B.B. King Blvd | Memphis, TN 38103 | (901) 250-5737 | biotrinsic@Indigoag.com | growbiotrinsic.com



COMPATIBILITY REFERENCE SHEET

biotrinsic



**SATISFACTION
GUARANTEE**
100% with replant policy.

APPROVED SEED TREATMENT PACKAGES

Indigo's proprietary collection of seed treatments powered by the world's beneficial microbes contains live organisms that could be harmed by some commercially available seed treatments. The following treatment packages have been reviewed by Indigo for compatibility and can be safely used in conjunction with biotrinsic® by Indigo® biological products. Use of other seed treatments not listed below could risk damage to the Indigo microbes and negatively impact product performance. Please consult with Indigo if there are questions on compatibility of specific seed treatments.

Corn & Soybean - biotrinsic® X19 FP

APPROVED SEED TREATMENTS

PLANTING WINDOW (DAYS)

Untreated	15
Acceleron®	15
Allegiance® FL/LS	15
CruiserMaxx® 250	15
Ilevo®	15
LumiGEN® Base	15
Salto®	15

After applying the Indigo microbial product onto the seed, it is recommended to plant the Indigo treated seed within the planting window listed for optimum results.

Please contact Indigo at (901) 250-5737

if your chemistry is not on this list, or if you have any questions regarding this product and its compatibility.

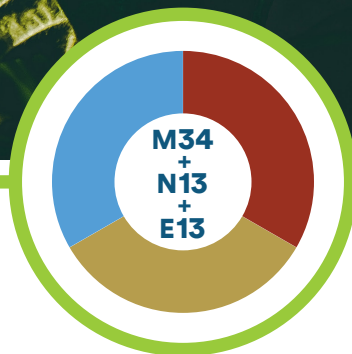
Growers are solely responsible for understanding and abiding by all applicable current:

(i) product use label directions, including restrictions for use; and (ii) federal, state and/or local regulations regarding the use of such product(s). Indigo disclaims any and all liability in connection with such grower obligations and practices.

This document is produced for marketing/promotional purposes only. Except for the Grower Satisfaction Guarantee as expressly described, Indigo does not make any guarantees with respect to any outcomes of any Indigo product or service. A wide range of variables affect product performance, your results may vary. Product may not be available in all areas. Registered trademarks are the property of their respective owners, and are used here for identification purposes only. [V1.A 12.01.22]

50 South B.B. King Blvd | Memphis, TN 38103 | (901) 250-5737 | biotrinsic@indigoag.com | growbiotrinsic.com





Soybean

PRODUCT INFORMATION

biottrinsic



**SATISFACTION
GUARANTEE**
100% with replant policy.



Soybean

biottrinsic® M34 + N13 + E13

Indigo's Biological Seed Treatment

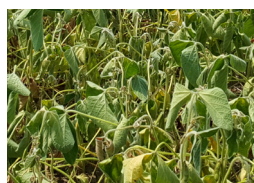
Plant for Performance and Grow with Confidence

biottrinsic® M34+N13 is a powerhouse combination of multiple microbes that work together to improve nutrient loading into the plant resulting in greater growth and resilience in the spring leading to a stronger healthier plant that can better withstand stresses during flowering and pod fill.

2 NEW BREAKTHROUGH TECHNOLOGIES COMBINED TO INCREASE NUTRIENT UPTAKE IN STRESSFUL CONDITIONS

Have you experienced variability, environmental, or nutrient stress that impacts yield in your fields or across your farm?

If so, this can result in shortened soybean plants, low pod number, low seed number, dry or shriveled roots, nodules, seeds, and pods, wilting plants, and yield loss. What if there was a product that could help your soybean plant withstand the stresses that are negatively impacting yield?



+2
Avg bu/a

- low rainfall
- higher temperatures
- moderate soil water holding capacity

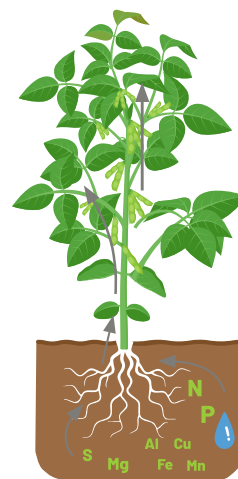
2 years field trials

- **biottrinsic® M34 + N13 starts working from the moment you plant the seed and works from the roots to the shoots to improve environmental stress tolerance and nutrient loading all season long to help your crop better withstand the stresses negatively impacting yield.**
- **Our proprietary 3 strain Bradyrhizobium blend increases nitrogen fixation and is 30-100% more efficient than other products.**

HOW IT WORKS

biottrinsic® M34+N13 is a combination of multiple microbes that work together to mine nutrients from the soil and load them into the plant. This leads to greater growth and resilience to stress throughout the season.

- **biottrinsic® M34 works by reducing the pH of the soil around the roots in order to increase the availability and mobility of nutrients. Lowering soil PH causes nutrients to be more soluble, leading to better utilization by the plant.**
- **biottrinsic® M34 significantly improves water-solubility of key micronutrients required for plant growth.**
- **Improvement in soil to plant nutrient uptake is most pronounced in biottrinsic® M34 treated plants under water deficit conditions. This means that when drought strikes during the critical flowering and pod fill stages, treated plants demonstrate greater resilience.**
- **In the lab, when we compare treated to untreated soybean we have observed the treated nutrient content being reduced in the soil and increased in the plant's root and shoot.**
- **In the field, when we compare treated to untreated soybean leaves using sap analysis we see increased nutrient concentrations.**



N NITROGEN
P PHOSPHORUS
S Sulfur
Mg Magnesium
Al Aluminum
Cu Copper
Fe Iron
Mn Manganese

MOISTURE

*Product performance information based on third-party field trials. Results will vary across growers and farm operations. A number of variables may affect agronomic outcomes. Indigo does not make any representations, warranties or guarantees as to any specific results or outcomes. Product may not be available in all areas. Limitations, terms, and conditions apply. [V1.A 12.01.22]

50 South B.B. King Blvd | Memphis, TN 38103 | (901) 250-5737 | biottrinsic@Indigoag.com | growbiottrinsic.com

biottrinsic®

Soybean

biottrinsic® M34 + N13 + E13

PRODUCT DETAILS

CAN BE USED ON

- Fields where nutrient deficiencies have limited yields in the past.
- Fields where temperature exceeds 94°F during the growing season.
- Dryland fields where rain fed crops are limited by moisture.
- Crops that are planted in an ideal or late planting window.
- All soybean varieties and traits.

Pkg Treats	Pkgs/ Case	Case	Case Treats	Unit Measures
40 units	5	5x2x40	400 units	50 lbs
400 units	1	1x400	400 units	50 lbs

HOW TO USE IT

- Seed treater friendly.
- By applying it directly to the seed the microbes adhere to the roots where it starts working immediately supporting plant health and nutrition. You don't have to worry about weather events stripping away your investment.
- The low use rate allows additional room on the seed so it can be applied with other products.
- Applications on the seed creates an immediate team between microbes and plants positively improving plant and root growth with no wasted time. Our seed treatment starts working the moment you plant because it's on the seed.
- 120 days on-seed stability provides the flexibility you need during the planting season.
- Broad chemical compatibility so it can be used with your existing treatments. Always reference Indigo's compatibility guide.

5X2X40 UNITS



5 BOXES IN A CASE



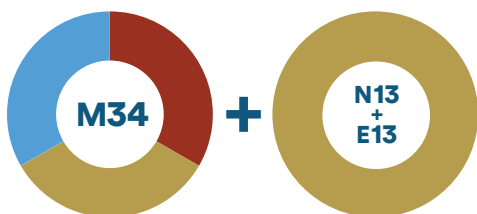
400 UNITS



*Product performance information based on third-party field trials. Results will vary across growers and farm operations. A number of variables may affect agronomic outcomes. Indigo does not make any representations, warranties or guarantees as to any specific results or outcomes. Product may not be available in all areas. Limitations, terms, and conditions apply. [V1.A 12.01.22]

50 South B.B. King Blvd | Memphis, TN 38103 | (901) 250-5737 | biottrinsic@Indigoag.com | growbiottrinsic.com

biottrinsic



COMPATIBILITY REFERENCE SHEET

biotrinsic



**SATISFACTION
GUARANTEE**
100% with replant policy.

APPROVED SEED TREATMENT PACKAGES

Indigo's proprietary collection of seed treatments powered by the world's beneficial microbes contains live organisms that could be harmed by some commercially available seed treatments. The following treatment packages have been reviewed by Indigo for compatibility and can be safely used in conjunction with biotrinsic® by Indigo® biological products. Use of other seed treatments not listed below could risk damage to the Indigo microbes and negatively impact product performance. Please consult with Indigo if there are questions on compatibility of specific seed treatments.

Soybean - biotrinsic® M34 WP + biotrinsic® N13 WD + biotrinsic® E13 WD

APPROVED SEED TREATMENTS

PLANTING WINDOW (DAYS)

Untreated	120
Acceleron®	60
ApronMaxx® BeanPak	60
ApronMaxx® RFC	120
ApronMaxx® RTA	120
CruiserMaxx®	60
CruiserMaxx® Advanced	60
Innovate System	120
Poncho® / VOTiVO®	60
Rancona 3.8 FS	120
Trilex 6000	60
Warden® RTA	120

*M34 WP is compatible with all chemistries listed under N13 as well as chemistries listed above.

After applying the Indigo microbial product onto the seed, it is recommended to plant the Indigo treated seed within the planting window listed for optimum results.



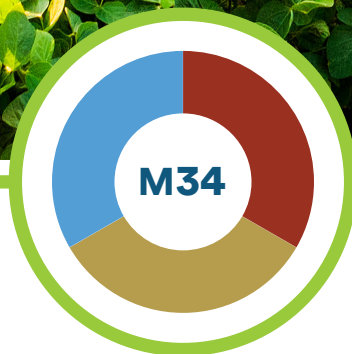
Growers are solely responsible for understanding and abiding by all applicable current:

(i) product use label directions, including restrictions for use; and (ii) federal, state and/or local regulations regarding the use of such product(s). Indigo disclaims any and all liability in connection with such grower obligations and practices.

This document is produced for marketing/promotional purposes only. Except for the Grower Satisfaction Guarantee as expressly described, Indigo does not make any guarantees with respect to any outcomes of any Indigo product or service. A wide range of variables affect product performance, your results may vary. Product may not be available in all areas. Registered trademarks are the property of their respective owners, and are used here for identification purposes only. [V1.A 12.01.22]

50 South B.B. King Blvd | Memphis, TN 38103 | (901) 250-5737 | biotrinsic@indigoag.com | growbiotrinsic.com





Soybean

PRODUCT INFORMATION

biottrinsic

 **SATISFACTION
GUARANTEE**
100% with replant policy.

Indigo's Biological Seed Treatment

Plant for Performance and Grow with Confidence

biotrinsic® M34 is a powerful microbe that improves nutrient loading into the soybean plant resulting in greater root and plant growth which leads to a stronger healthier plant that can better withstand stresses during the yield critical stages of flowering and pod fill.

NEW BREAKTHROUGH TECHNOLOGY TO INCREASE NUTRIENT UPTAKE IN STRESSFUL CONDITIONS

Have you experienced variability, environmental, or nutrient stress that impacts yield in your fields or across your farm?

If so, this can result in shortened soybean plants, low pod number, low seed number, dry or shriveled seeds and pods, wilting plants, and yield loss. What if there was a product that could help your soybean plant withstand the stresses that are negatively impacting yield?

■ **biotrinsic® M34 starts working from the moment you plant the seed and works from the roots to the shoots to improve environmental stress tolerance and nutrient loading all season long to help your crop better withstand the stresses negatively impacting yield**

+2

Avg bu/a

2 years field trials

- low rainfall
- higher temperatures
- moderate soil water holding capacity

biotrinsic® M34 consistently shows an increase in the lab and field



*Product performance information based on third-party field trials. Results will vary across growers and farm operations. A number of variables may affect agronomic outcomes. Indigo does not make any representations, warranties or guarantees as to any specific results or outcomes. Product may not be available in all areas. Limitations, terms, and conditions apply. [V1.A 12.01.22]

50 South B.B. King Blvd | Memphis, TN 38103 | (901) 250-5737 | biotrinsic@Indigoag.com | growbiotrinsic.com

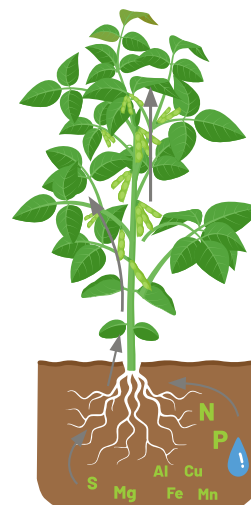
biotrinsic®

Soybean

biotrinsic® M34

HOW IT WORKS

- biotrinsic® M34 works by reducing the pH of the soil around the roots in order to increase the availability and mobility of nutrients. Lowering soil PH causes nutrients to be more soluble, leading to better utilization by the plant.
- biotrinsic® M34 significantly improves water-solubility of key micronutrients required for plant growth.
- Improvement in soil to plant nutrient uptake is most pronounced in biotrinsic® M34 treated plants under water deficit conditions. This means that when drought strikes during the critical flowering and pod fill stages, treated plants demonstrate greater resilience.
- In the lab, when we compare treated to untreated soybean we have observed the treated nutrient content being reduced in the soil and increased in the plant's root and shoot.
- In the field, when we compare treated to untreated soybean leaves using sap analysis we see increased nutrient concentrations.



N NITROGEN
P PHOSPHORUS

S Sulfur
Mg Magnesium

Al Aluminum
Cu Copper
Fe Iron
Mn Manganese

! MOISTURE

PRODUCT DETAILS

CAN BE USED ON

- Fields where nutrient deficiencies have limited yields in the past.
- Fields where temperature exceeds 94°F during the growing season.
- Dryland fields where rain fed crops are limited by moisture.
- Crops that are planted in an ideal or late planting window.
- All soybean varieties and traits.

HOW TO USE IT

- Seed treater friendly.
- The low use rate allows additional room on the seed so it can be applied with other products.
- FP provides 365 days and WP provides 180 days on-seed stability giving the flexibility you need during the planting season.
- Broad chemical compatibility so it can be used with your existing treatments. Always reference Indigo's compatibility guide.

Formula	Pkg Treats	Pkgs/ Case	Case	Case Treats	Unit Measures
FP	40 units	5	5x1x40	200 units	50 lbs
FP	250 units	1	1x250	250 units	50 lbs

FP Application Rate: 1 vol oz/CWT

Formula	Pkg Treats	Pkgs/ Case	Case	Case Treats	Unit Measures
WP	40 units	5	5x2x40	400 units	50 lbs

WP Application Rate: 1.60 fl oz/CWT
(after dilution in mix tank slurry)

5X2X40 UNITS



X10



250 UNITS



5X1X40 UNITS



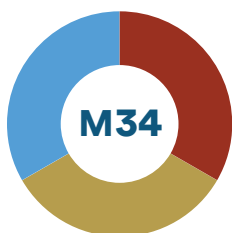
X5



*Product performance information based on third-party field trials. Results will vary across growers and farm operations. A number of variables may affect agronomic outcomes. Indigo does not make any representations, warranties or guarantees as to any specific results or outcomes. Product may not be available in all areas. Limitations, terms, and conditions apply. [V1.A 12.01.22]

50 South B.B. King Blvd | Memphis, TN 38103 | (901) 250-5737 | biotrinsic@Indigoag.com | growbiotrinsic.com

biotrinsic®



COMPATIBILITY REFERENCE SHEET

biottrinsic



**SATISFACTION
GUARANTEE**
100% with replant policy.

APPROVED SEED TREATMENT PACKAGES

Indigo's proprietary collection of seed treatments powered by the world's beneficial microbes contains live organisms that could be harmed by some commercially available seed treatments. The following treatment packages have been reviewed by Indigo for compatibility and can be safely used in conjunction with biottrinsic[®] by Indigo[®] biological products. Use of other seed treatments not listed below could risk damage to the Indigo microbes and negatively impact product performance. Please consult with Indigo if there are questions on compatibility of specific seed treatments.

Soybean - biottrinsic[®] M34 FP/WP

APPROVED SEED TREATMENTS

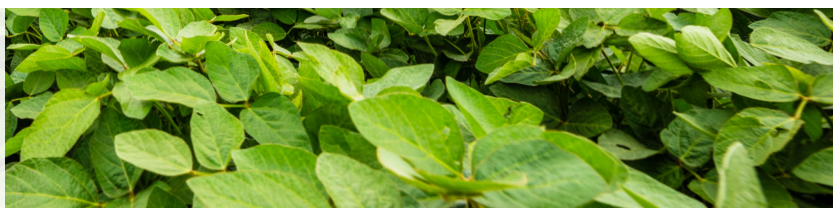
PLANTING WINDOW (DAYS)

Untreated	365
Allegiance [®]	365
ApronMaxx [®] RTA [®]	365
Avicta [®] 500 FS	365
CruiserMaxx [®] Beans	365
Duvet ST	365
ILEVO [®]	365
Inovate	365
Intego [®] Solo	365
Lumisena	365
Metalaxyl/T-Methyl	365
PPST + Lumisena	365
Resonate [®]	365
Saltro	365
Warden [®]	365

After applying the Indigo microbial product onto the seed, it is recommended to plant the Indigo treated seed within the planting window listed for optimum results.

Please contact Indigo at (901) 250-5737

if your chemistry is not on this list, or if you have any questions regarding this product and its compatibility.



Growers are solely responsible for understanding and abiding by all applicable current:

(i) product use label directions, including restrictions for use; and (ii) federal, state and/or local regulations regarding the use of such product(s). Indigo disclaims any and all liability in connection with such grower obligations and practices.

This document is produced for marketing/promotional purposes only. Except for the Grower Satisfaction Guarantee as expressly described, Indigo does not make any guarantees with respect to any outcomes of any Indigo product or service. A wide range of variables affect product performance, your results may vary. Product may not be available in all areas. Registered trademarks are the property of their respective owners, and are used here for identification purposes only. [V1.A 12.01.22]

50 South B.B. King Blvd | Memphis, TN 38103 | (901) 250-5737 | biottrinsic@indigoag.com | growbiottrinsic.com





Soybean

PRODUCT INFORMATION

biottrinsic



**SATISFACTION
GUARANTEE**
100% with replant policy.



Soybean

biotrinsic® N13 + E13

Indigo's Biological Seed Treatment

Plant for Performance and Grow with Confidence

biotrinsic® N13 is our proprietary multi strain Bradyrhizobium that is 30-100% more efficient at nitrogen fixation than older strains.

2 NEW BREAKTHROUGH TECHNOLOGIES

Have you experienced variability, environmental, or nutrient stress that impacts yield in your fields or across your farm? biotrinsic® N13 and biotrinsic® E13 combine to increase nutrient uptake in stressful conditions. Your soybean rhizobium may not be delivering nitrogen efficiently to your soybean plants.

- Nitrogen deficiency and inefficient rhizobium strains can result in shortened soybean plants, low pod number, low seed number, dry or shriveled seeds, nodules, and pods, wilting plants, and yield loss.**
- biotrinsic® N13 starts working from the moment you plant the seed and works from the roots to the shoots to improve environmental stress tolerance and nutrient loading all season long to help your crop better withstand the stresses negatively impacting yield.**

biotrinsic® N13 starts working from the moment you plant the seed and works from the roots to the shoots to improve environmental stress tolerance and nutrient loading all season long to help your crop better withstand the stresses negatively impacting yield.

FEATURES AND BENEFITS

- Nodules are larger leading to increased holding capacity of nitrogen for the plant's use.
- biotrinsic® N13 nodules are wrinkled in appearance and provide greater surface area for nitrogen conversion.
- Includes biotrinsic® E13, an extender, which facilitates on seed survival of 120 days providing greater planting flexibility.
- Includes a polymer that supports on seed stability and seed flow resulting in fewer skips and doubles.
- Tolerant to glyphosate which optimizes nitrogen fixation.
- Works better than traditional Bradyrhizobium in hot dry soils or cool wet soils.

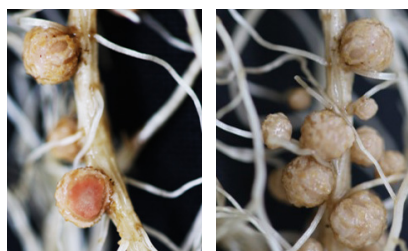
1 patented strain

glyphosate tolerant

3 exclusive strains

more efficient

Strong leghemoglobin response in nodules; actively fixing nitrogen



biotrinsic®
M34+N13+E13

Significant increase of nodulation on the tap root



Untreated

biotrinsic®
M34+N13+E13

Treated plants show less symptoms of nitrogen deficiency



Untreated

biotrinsic®
M34+N13+E13

*Product performance information based on third-party field trials. Results will vary across growers and farm operations. A number of variables may affect agronomic outcomes. Indigo does not make any representations, warranties or guarantees as to any specific results or outcomes. Product may not be available in all areas. Limitations, terms, and conditions apply. [V1.A 12.01.22]

50 South B.B. King Blvd | Memphis, TN 38103 | (901) 250-5737 | biotrinsic@Indigoag.com | growbiotrinsic.com

biotrinsic®

Soybean

biotrinsic® N13 + E13



Untreated



biotrinsic® N13

biotrinsic® N13 at work in the field



PRODUCT DETAILS

CAN BE USED ON

- Fields where nutrient deficiencies have limited yields in the past.
- Fields that have a history of flooding or long periods of drought or high temperatures.
- Sandy soils where it is more difficult for rhizobia to survive one season to the next.
- Fields that have low soil phosphorus.
- Fields that have low soil phosphorus or don't have the optimal soil pH of 6 to 7.
- All soybean varieties and traits.

Pkg Treats	Pkgs/ Case	Case	Case Treats	Unit Measures
400 units	1	1x400	400 units	50 lbs

Application Rate: 1.35 fl oz/CWT
(after dilution in mix tank slurry)

HOW TO USE IT

- Seed treater friendly.
- The low use rate allows additional room on the seed so it can be applied with other products.
- 120 days on-seed stability provides the flexibility you need during the planting season.
- Broad chemical compatibility so it can be used with your existing treatments. Always reference Indigo's compatibility guide.



*Product performance information based on third-party field trials. Results will vary across growers and farm operations. A number of variables may affect agronomic outcomes. Indigo does not make any representations, warranties or guarantees as to any specific results or outcomes. Product may not be available in all areas. Limitations, terms, and conditions apply. [V1.A 12.01.22]

50 South B.B. King Blvd | Memphis, TN 38103 | (901) 250-5737 | biotrinsic@Indigoag.com | growbiotrinsic.com

biotrinsic®



COMPATIBILITY REFERENCE SHEET



**SATISFACTION
GUARANTEE**
100% with replant policy.

APPROVED SEED TREATMENT PACKAGES

Indigo's proprietary collection of seed treatments powered by the world's beneficial microbes contains live organisms that could be harmed by some commercially available seed treatments. The following treatment packages have been reviewed by Indigo for compatibility and can be safely used in conjunction with biotrinsic® by Indigo® biological products. Use of other seed treatments not listed below could risk damage to the Indigo microbes and negatively impact product performance. Please consult with Indigo if there are questions on compatibility of specific seed treatments.

Soybean - biotrinsic® N13 WD + biotrinsic® E13 WD

APPROVED SEED TREATMENTS

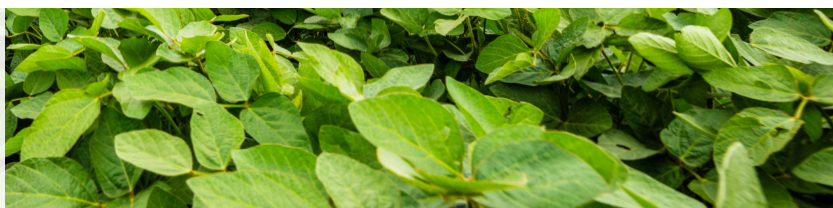
PLANTING WINDOW (DAYS)

Untreated	120
Acceleron®	60
ApronMaxx® BeanPak	60
ApronMaxx® RFC	120
ApronMaxx® RTA	120
CruiserMaxx®	60
CruiserMaxx® Advanced	60
Innovate System	120
Poncho® / VOTiVO®	60
Rancona 3.8 FS	120
Trilex 6000	60
Warden® RTA	120

After applying the Indigo microbial product onto the seed, it is recommended to plant the Indigo treated seed within the planting window listed for optimum results.

Please contact Indigo at (901) 250-5737

if your chemistry is not on this list, or if you have any questions regarding this product and its compatibility.



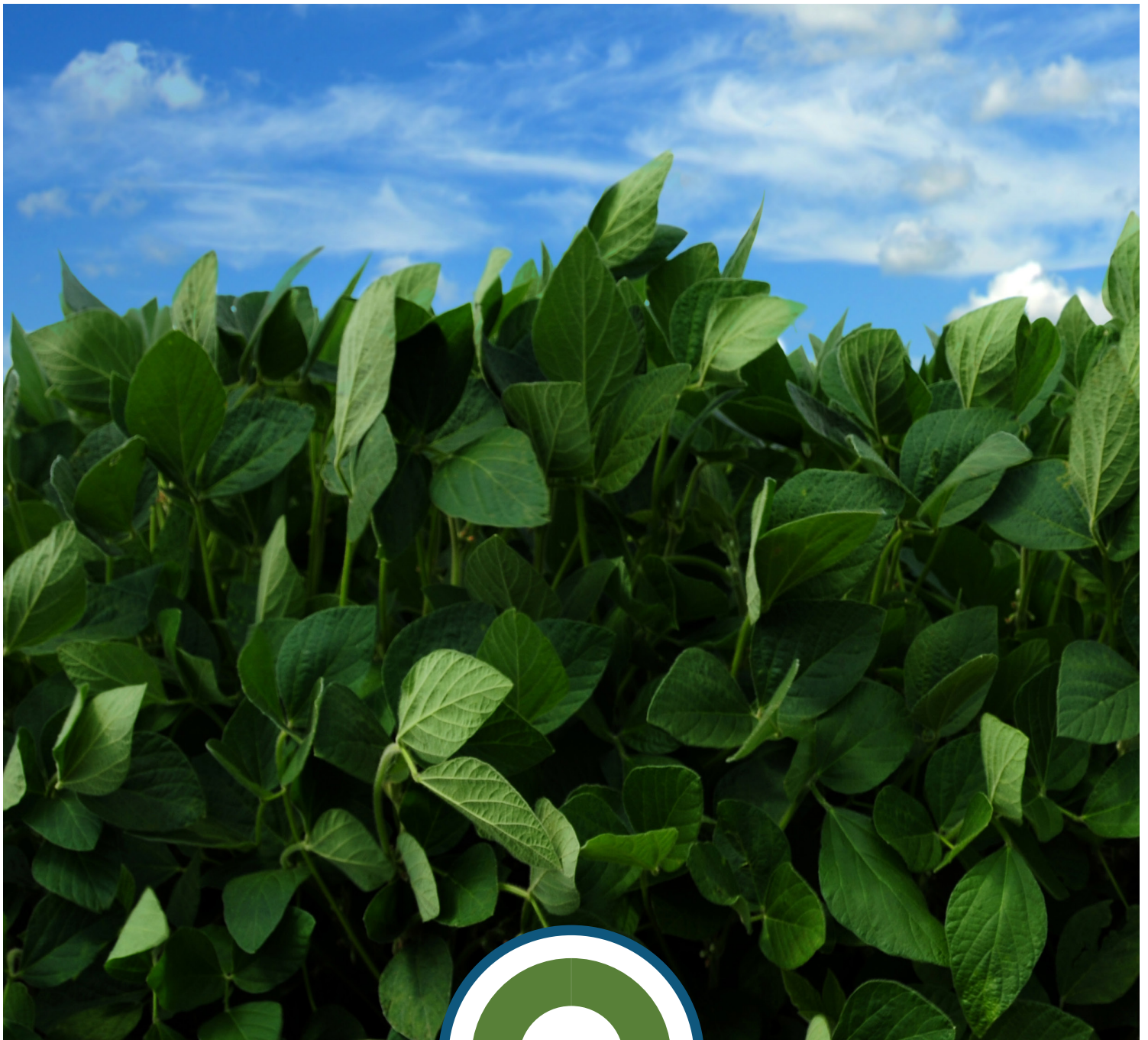
Growers are solely responsible for understanding and abiding by all applicable current:

(i) product use label directions, including restrictions for use; and (ii) federal, state and/or local regulations regarding the use of such product(s). Indigo disclaims any and all liability in connection with such grower obligations and practices.

This document is produced for marketing/promotional purposes only. Except for the Grower Satisfaction Guarantee as expressly described, Indigo does not make any guarantees with respect to any outcomes of any Indigo product or service. A wide range of variables affect product performance, your results may vary. Product may not be available in all areas. Registered trademarks are the property of their respective owners, and are used here for identification purposes only. [V1.A 12.01.22]

50 South B.B. King Blvd | Memphis, TN 38103 | (901) 250-5737 | biotrinsic@indigoag.com | growbiotrinsic.com





Biofungicide

for Soybean Crops

PRODUCT INFORMATION

biottrinsic



Indigo's Biological Seed Treatment

Plant for Performance and Grow with Confidence

Biofungicide

biotrinsic® X14

biotrinsic® X14 WD is a new biological seed treatment for the prevention of soilborne fungal diseases in soybeans such as *Fusarium virguliforme* the causal agent for Sudden Death Syndrome (SDS).

FEATURES AND BENEFITS

- SDS control with no "Halo Effect" while providing consistent germination.
- Natamycin is the active ingredient and provides a new mode of action.
 - New MOA is frac group 48.
 - Helps decrease resistance through integrated pest management prevents soil-borne fungi from attacking plants.
- Defense against SDS without signs of plant stress, phytotoxicity, stunting, or reduced stands.
- Helps increase plant vigor.
- Promotes root development, stand establishment, and healthier plants resulting in higher yield potential.

DISEASES TREATED

- » *Fusarium* spp
such as *Fusarium virguliforme* (SDS)
- » *Rhizoctonia* spp

+4.3
Average bu/ac

Yield Uplift
In comparison to
Acceleron® Standard alone



ILEVO®
+ Acceleron® Standard



biotrinsic® X14 WD
+ Acceleron® Standard + Avicta®

Representative observations from 15 field trials across IA, IL, IN, MI, MN, MO, NE, OH, WI *Avicta® was added to the biotrinsic® X14 treatment to ensure nematode control and reduce any effects so there would be a true SDS comparison.

HOW IT WORKS

- New FRAC group 48 MOA: binds to ergosterol, a sterol only present in fungal cell membrane.
- Bacteria, humans, and plants don't have ergosterol in their cell walls so they aren't affected and it makes it very safe.
- Ergosterol maintains fungal homeostasis, so binding disrupts fungal stability.

*Product performance information based on third-party field trials. Results will vary across growers and farm operations. A number of variables may affect agronomic outcomes. Indigo does not make any representations, warranties or guarantees as to any specific results or outcomes. Product may not be available in all areas. Limitations, terms, and conditions apply. [V1.A 12.01.22]

50 South B.B. King Blvd | Memphis, TN 38103 | (901) 250-5737 | biotrinsic@Indigoag.com | growbiotrinsic.com

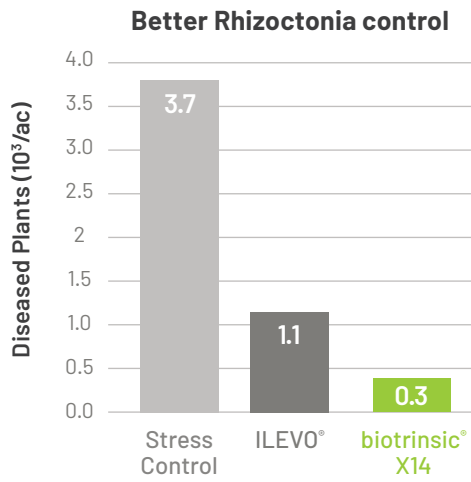
biotrinsic®

Biofungicide

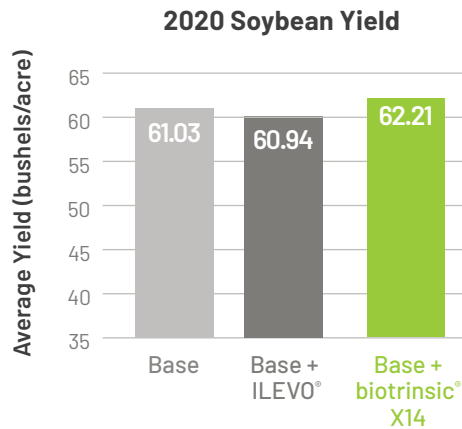
biotrinsic® X14

COMPETITIVE BENEFIT

- New MOA for resistance management.
- Additional control of *Fusarium* spp. (not only SDS) and rhizoctonia seedling diseases.



Average of 4 reps in one location in IA, 28 days after planting



- » Trial type: 2020
- » Crop: Soybean
- » Locations: 9 trials across 5 locations in Indiana
- » Base package: Fluxapyroxad, Imidacloprid, Metalaxyl, Pyraclostrobin, Thiophanate-methyl



HOW TO USE IT

- Minimum shelf life of 2 years
- Low use rate 1.23 fl oz./cwt

Pkg Treats	Pkg Size	Case	Case Treats	Unit Measures
520 units	2x2.5 gal jug	1x520	520 units	50 lbs

Application Rate: 1.23 fl oz / CWT



*Product performance information based on third-party field trials. Results will vary across growers and farm operations. A number of variables may affect agronomic outcomes. Indigo does not make any representations, warranties or guarantees as to any specific results or outcomes. Product may not be available in all areas. Limitations, terms, and conditions apply. [V1.A 12.01.22]

50 South B.B. King Blvd | Memphis, TN 38103 | (901) 250-5737 | biotrinsic@Indigoag.com | growbiotrinsic.com

biotrinsic®



COMPATIBILITY REFERENCE SHEET

biottrinsic



**SATISFACTION
GUARANTEE**
100% with replant policy.

APPROVED SEED TREATMENT PACKAGES

Indigo's proprietary collection of seed treatments powered by the world's beneficial microbes contains live organisms that could be harmed by some commercially available seed treatments. The following treatment packages have been reviewed by Indigo for compatibility and can be safely used in conjunction with biottrinsic® by Indigo® biological products. Use of other seed treatments not listed below could risk damage to the Indigo microbes and negatively impact product performance. Please consult with Indigo if there are questions on compatibility of specific seed treatments.

Soybean - biottrinsic® X14 WD

APPROVED SEED TREATMENTS

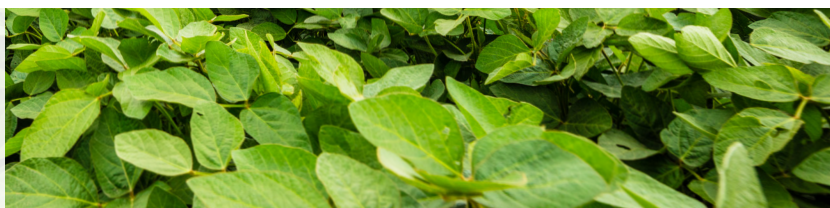
PLANTING WINDOW (DAYS)

Untreated	365
Acceleron®	365
Allegiance®	365
Apron®	365
Captan 4L	365
Cruiser®	365
Dynasty®	365
Gauche®	365
Maxim® 4FS	365
Trilex®	365
Vibrance®	365

After applying the Indigo microbial product onto the seed, it is recommended to plant the Indigo treated seed within the planting window listed for optimum results.

Please contact Indigo at (901) 250-5737

if your chemistry is not on this list, or if you have any questions regarding this product and its compatibility.



Growers are solely responsible for understanding and abiding by all applicable current:

(i) product use label directions, including restrictions for use; and (ii) federal, state and/or local regulations regarding the use of such product(s). Indigo disclaims any and all liability in connection with such grower obligations and practices.

This document is produced for marketing/promotional purposes only. Except for the Grower Satisfaction Guarantee as expressly described, Indigo does not make any guarantees with respect to any outcomes of any Indigo product or service. A wide range of variables affect product performance, your results may vary. Product may not be available in all areas. Registered trademarks are the property of their respective owners, and are used here for identification purposes only. [V1.A 12.01.22]

50 South B.B. King Blvd | Memphis, TN 38103 | (901) 250-5737 | biottrinsic@indigoag.com | growbiottrinsic.com





Cotton

PRODUCT INFORMATION

biotrinsic



**SATISFACTION
GUARANTEE**
100% with replant policy.



Cotton

biottrinsic® WT29

Indigo's Biological Seed Treatment

Plant for Performance and Grow with Confidence

biottrinsic® WT29 improves drought and heat protection during critical stages including squaring and boll development. It works symbiotically with the cotton plant to optimize root growth and help improve the amount of water the plant can take in and use for evaporative cooling and growth.

biottrinsic® WT29 works by enhancing root growth, improving water uptake, and increasing plant growth that leads to increased yield.

Improved retention of 1st position bolls under drought stress.

- 1st position bolls account for 66-75% of lint yield while 2nd and 3rd position bolls account for 18-20% of lint yield.
- 1st position boll retention is critical because it helps reduce the plant's dependency on second and third position bolls.
- When drought stress occurs, be proactive in protecting your crop and make sure it's ready if drought hits.

Improved drought tolerance that leads to increased yield.

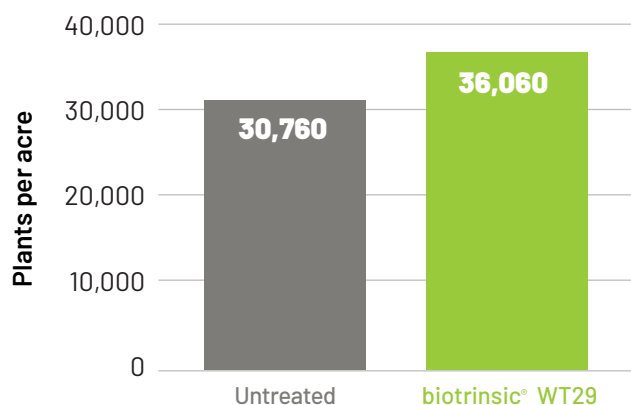
- By the time drought occurs you've already lost yield and bolls are on the ground.

Improves seed nutrient conditions for root and plant growth and seed germination which increases stand establishment and mid-season development.

5 years of product testing and field data.

Early and mid-season establishment supports increased end of season performance

POPULATION AFTER EXTREME HEAT - JUNE 2019



Plants per acre are the number of plants estimated to have emerged using a 1/1000th plant counting scale



Untreated

biottrinsic® WT29

Estill, SC - Variety: DP1646

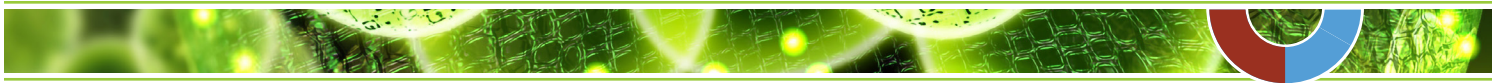
\$13.25

additional savings
on average

*Product performance information based on third-party field trials. Results will vary across growers and farm operations. A number of variables may affect agronomic outcomes. Indigo does not make any representations, warranties or guarantees as to any specific results or outcomes. Product may not be available in all areas. Limitations, terms, and conditions apply. [V1.A 12.01.22]

50 South B.B. King Blvd | Memphis, TN 38103 | (901) 250-5737 | biottrinsic@Indigoag.com | growbiottrinsic.com

biottrinsic®



Cotton

biottrinsic® WT29

DROUGHT DURING pre-bloom + reproductive growth

+34

lb lint/ac

+4.0%

uplift

88%

win-rate

Avg. of 121 data points across 3 years of trialing (2016, 2017, 2020)

DROUGHT DURING reproductive growth

+26

lb lint/ac

+3.4%

uplift

100%

win-rate

Avg. of 43 data points across 3 years of trialing (2016, 2017, 2020)

HEAT STRESS

+26

lb lint/ac

+2.4%

uplift

86%

win-rate

Avg. of 129 data points across 3 years of trialing (2016, 2017, 2020)



Untreated



biottrinsic® WT29



UNTREATED

Average 6
bolls/plant



biottrinsic® WT29

Average 21
bolls/plant



5X



HOW TO USE IT

- Can be applied to cotton seed in the pro box, mini bulk, seed tender, or planter hopper (always follow recommended on seed stability guidelines).
- Broad chemical compatibility so it can be used with your existing treatments. Always reference Indigo's compatibility guide.

Pkg Treats	Pkgs/Case	Case	Case Treats	Unit Measures
20 units	5	5x1x20	100 units	50 lbs or 240,000 seeds

FP Application Rate: 1 vol oz/CWT

*Product performance information based on third-party field trials. Results will vary across growers and farm operations. A number of variables may affect agronomic outcomes. Indigo does not make any representations, warranties or guarantees as to any specific results or outcomes. Product may not be available in all areas. Limitations, terms, and conditions apply. [V1.A 12.01.22]

50 South B.B. King Blvd | Memphis, TN 38103 | (901) 250-5737 | biottrinsic@Indigoag.com | growbiottrinsic.com

biottrinsic



COMPATIBILITY REFERENCE SHEET

biottrinsic



**SATISFACTION
GUARANTEE**
100% with replant policy.

APPROVED SEED TREATMENT PACKAGES

Indigo's proprietary collection of seed treatments powered by the world's beneficial microbes contains live organisms that could be harmed by some commercially available seed treatments. The following treatment packages have been reviewed by Indigo for compatibility and can be safely used in conjunction with biottrinsic[®] by Indigo[®] biological products. Use of other seed treatments not listed below could risk damage to the Indigo microbes and negatively impact product performance. Please consult with Indigo if there are questions on compatibility of specific seed treatments.

Cotton - biottrinsic[®] WT29 FP

APPROVED SEED TREATMENTS PLANTING WINDOW (DAYS)

Untreated	75
Acceleron [®] Seed Applied Solutions BASIC	60
Acephate	30
Albaugh [®] BIOST [®] 100	30
Americot Standard	60
Apron XL [®]	60
Avicta [®] 500FS	60
Avicta [®] Bion	75
Avicta [®] Elite	60
Consensus	60
CottolyST Base	60
CottolyST Enhanced	60
CottolyST IMI	60
CottolyST Premier	60
Cruiser [®] 5FS	75
Dyna-Shield Flowtection [®]	60

APPROVED SEED TREATMENTS PLANTING WINDOW (DAYS)

Metlock [®]	60
PhytoGen [®] TRiO + Aeris [®] (PHY495)	15
Resonate [®]	60
Rizolex [®]	60
Sebring [®] 480FS	60
Spirato 480FS	60

After applying the Indigo microbial product onto the seed, it is recommended to plant the Indigo treated seed within the planting window listed for optimum results



Please contact Indigo at (901) 250-5737

if your chemistry is not on this list, or if you have any questions regarding this product and its compatibility.

Growers are solely responsible for understanding and abiding by all applicable current:

(i) product use label directions, including restrictions for use; and (ii) federal, state and/or local regulations regarding the use of such product(s). Indigo disclaims any and all liability in connection with such grower obligations and practices.

This document is produced for marketing/promotional purposes only. Except for the Grower Satisfaction Guarantee as expressly described, Indigo does not make any guarantees with respect to any outcomes of any Indigo product or service. A wide range of variables affect product performance, your results may vary. Product may not be available in all areas. Registered trademarks are the property of their respective owners, and are used here for identification purposes only. [V1.A 12.01.22]

50 South B.B. King Blvd | Memphis, TN 38103 | (901) 250-5737 | biottrinsic@indigoag.com | growbiottrinsic.com





Winter Wheat

PRODUCT INFORMATION

biottrinsic



**SATISFACTION
GUARANTEE**
100% with replant policy.

Indigo's Biological Seed Treatment

Plant for Performance and Grow with Confidence

biotrinsic® W13 is a beneficial microbe applied to the seed to help improve plant growth, tillering, and plant productivity.

FEATURES AND BENEFITS

- Can be used with a broad range of chemistries.
- Supports plant development throughout the season.
- Helps maximize yield potential throughout development.
- Broad geographic footprint supporting both Hard Red Wheat and Soft Red Wheat.
- Increases water absorbed by the roots.
- Increases root growth in both optimal and water stressed conditions.



Formula	Pkg Treats	Pkgs/ Case	Case	Case Treats	Unit Measures
FP	200 units	1	Pail	200 units	50 lbs
WD	200 units	1	1x200	200 units	50 lbs

Application Rate:

FP: 1 vol. Oz./cwt, WD: 1 fl Oz./cwt



Hard Red
Winter Wheat

Performance

4%

Yield Uplift

3 BU/AC

Yield Uplift

Soft Red
Winter Wheat

Performance

3%

Yield Uplift

2 BU/AC

Yield Uplift

*Product performance information based on third-party field trials. Results will vary across growers and farm operations. A number of variables may affect agronomic outcomes. Indigo does not make any representations, warranties or guarantees as to any specific results or outcomes. Product may not be available in all areas. Limitations, terms, and conditions apply. [V1.A 12.01.22]

50 South B.B. King Blvd | Memphis, TN 38103 | (901) 250-5737 | biotrinsic@Indigoag.com | growbiotrinsic.com

biotrinsic®



COMPATIBILITY REFERENCE SHEET

biotrinsic



**SATISFACTION
GUARANTEE**
100% with replant policy.

APPROVED SEED TREATMENT PACKAGES

Indigo's proprietary collection of seed treatments powered by the world's beneficial microbes contains live organisms that could be harmed by some commercially available seed treatments. The following treatment packages have been reviewed by Indigo for compatibility and can be safely used in conjunction with biotrinsic® by Indigo® biological products. Use of other seed treatments not listed below could risk damage to the Indigo microbes and negatively impact product performance. Please consult with Indigo if there are questions on compatibility of specific seed treatments.

biotrinsic® W13 FP/WD

APPROVED SEED TREATMENTS

PLANTING WINDOW (DAYS)

Untreated	365
Allegiance® FL/LS	365
Cruiser® 5FS	365
CruiserMaxx® Vibrance® Cereals	365
Maxim® 4FS	365
Nipsit® Suite Cereals OF	365
Raxil® Pro MD	365
Sativa® IMF Max	365
Stamina® F4	365
Vibrance® Extreme	365
Warden® Cereals 360	365
Warden® Cereals HR	365
Warden® Cereals WR11	365

Please contact Indigo at (3651) 250-5737

if your chemistry is not on this list, or if you have any questions regarding this product and its compatibility.

Growers are solely responsible for understanding and abiding by all applicable current:

(i) product use label directions, including restrictions for use; and (ii) federal, state and/or local regulations regarding the use of such product(s). Indigo disclaims any and all liability in connection with such grower obligations and practices.

This document is produced for marketing/promotional purposes only. Except for the Grower Satisfaction Guarantee as expressly described, Indigo does not make any guarantees with respect to any outcomes of any Indigo product or service. A wide range of variables affect product performance, your results may vary. Product may not be available in all areas. Registered trademarks are the property of their respective owners, and are used here for identification purposes only. [V1.A 12.01.22]

50 South B.B. King Blvd | Memphis, TN 38103 | (901) 250-5737 | biotrinsic@indigoag.com | growbiotrinsic.com





Winter Wheat

PRODUCT INFORMATION

biottrinsic



**SATISFACTION
GUARANTEE**
100% with replant policy.



Winter Wheat

biotrinsic® WN29

Indigo's Biological Seed Treatment

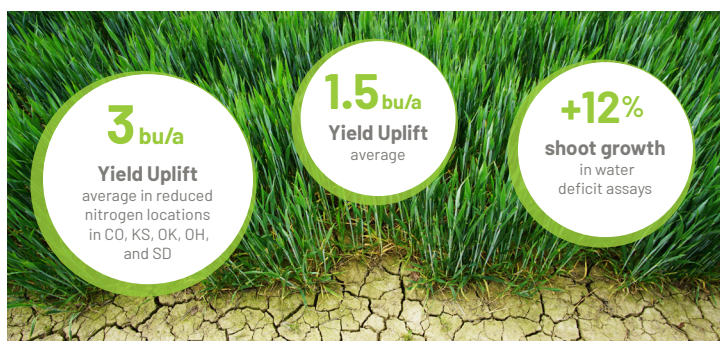
Plant for Performance and Grow with Confidence

biotrinsic® WN29 is a unique sporulated fungus that enhances wheat tolerance to dry planting conditions, droughty seasonal conditions, and reduced nitrogen areas.

FEATURES AND BENEFITS

Protects yield potential by improving:

- Shoot growth during droughty conditions.
- Plant growth during dry planting conditions.
- Drought tolerance throughout the season.
- Yield performance when nitrogen is limited.

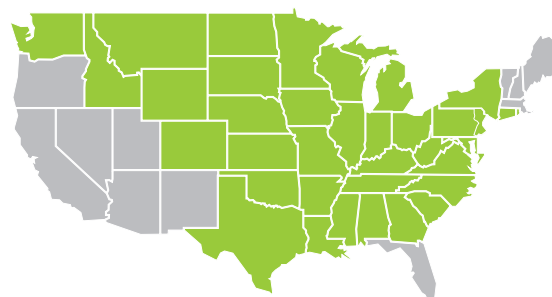


HOW IT WORKS

Protects yield potential by improving:

- Shoot growth creating a robust pipeline for nutrients and water.
- biotrinsic® WN29 active ingredient is *Cladosporium tenuissimum*, a sporulated fungus that has excellent survivorship during dry conditions.
- Win rate of 80% when wheat experiences drought stress during flowering and grain fill.

biotrinsic® approved states



PRODUCT DETAILS

Pkg Treats	Pkgs/Case	Case Size/Pail	Case Treats	Unit Measure
200 units	1	Pail	200 units	50 lbs



*Product performance information based on third-party field trials. Results will vary across growers and farm operations. A number of variables may affect agronomic outcomes. Indigo does not make any representations, warranties or guarantees as to any specific results or outcomes. Product may not be available in all areas. Limitations, terms, and conditions apply. [V1.A 12.01.22]

50 South B.B. King Blvd | Memphis, TN 38103 | (901) 250-5737 | biotrinsic@Indigoag.com | growbiotrinsic.com

biotrinsic



COMPATIBILITY REFERENCE SHEET

biottrinsic



**SATISFACTION
GUARANTEE**
100% with replant policy.

APPROVED SEED TREATMENT PACKAGES

Indigo's proprietary collection of seed treatments powered by the world's beneficial microbes contains live organisms that could be harmed by some commercially available seed treatments. The following treatment packages have been reviewed by Indigo for compatibility and can be safely used in conjunction with biottrinsic[®] by Indigo[®] biological products. Use of other seed treatments not listed below could risk damage to the Indigo microbes and negatively impact product performance. Please consult with Indigo if there are questions on compatibility of specific seed treatments.

biottrinsic[®] WN29 FP

APPROVED SEED TREATMENTS PLANTING WINDOW (DAYS)

Untreated	60
Allegiance [®] FL/LS	60
Cruiser [®] 5FS	60
CruiserMaxx [®] Vibrance Cereals	45
Maxim [®] 4FS	60
Nipsit [®] Suite Cereals OF	60
Raxil [®] Pro MD	60
Sativa [®] IMF Max	30
Stamina [®] F4	45
TMI-50	60
Vibrance [®] Extreme	60
Warden [®] Cereals 360	30
Warden [®] Cereals HR	30
Warden [®] Cereals WR11	30

Please contact Indigo at (901) 250-5737

if your chemistry is not on this list, or if you have any questions regarding this product and its compatibility.

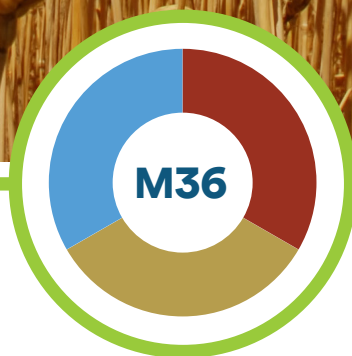
Growers are solely responsible for understanding and abiding by all applicable current:

(i) product use label directions, including restrictions for use; and (ii) federal, state and/or local regulations regarding the use of such product(s). Indigo disclaims any and all liability in connection with such grower obligations and practices.

This document is produced for marketing/promotional purposes only. Except for the Grower Satisfaction Guarantee as expressly described, Indigo does not make any guarantees with respect to any outcomes of any Indigo product or service. A wide range of variables affect product performance, your results may vary. Product may not be available in all areas. Registered trademarks are the property of their respective owners, and are used here for identification purposes only. [V1.A 12.01.22]

50 South B.B. King Blvd | Memphis, TN 38103 | (901) 250-5737 | biottrinsic@indigoag.com | growbiottrinsic.com





Winter Wheat + Cover Crops

PRODUCT INFORMATION

biotrinsic



**SATISFACTION
GUARANTEE**
100% with replant policy.



Indigo's Biological Seed Treatment

Plant for Performance and Grow with Confidence

biottrinsic® M36

biottrinsic® M36 is a unique microbe that helps increase the nutrient availability in the root zone and assists the plant in responding to heat and drought tolerance.

FEATURES AND BENEFITS

Protects yield potential by improving:

- Nutrient use efficiency
- Heat tolerance
- Drought tolerance



Untreated biottrinsic® M36

+3.7 bu/a

Uplift During
Heat Stress

+4 bu/a

Uplift During
Drought Stress

Heat Stress: data averaged over 62 data points
Drought stress during flowering and grain fill:
data averaged over 2 years and 145 data points

“ We tested Indigo's biological treatment on 300 acres of wheat to start. It was a night and day difference. **10 bushels an acre more** than our untreated fields. It even bumped up our variety's protein content, which ended up netting us a 37 cent premium. Next year, guess what we did? Put that seed treatment on all our wheat, and row crop acres too. ”

– Jon Johnson, Kansas Farm and Ranch Management

HOW IT WORKS

- Increases bioavailability of phosphorous and potassium to the plant through improving nutrient conditions in the soil for root and plant growth.
- Improves plant's tolerance to heat and drought to support root growth.
- Supports root mass and improves tillering by 12% on average.

Test plot: Bucklin, KS – Planting Date: October 2017 Progress: May 2, 2018



Untreated biottrinsic® M36



Untreated biottrinsic® M36

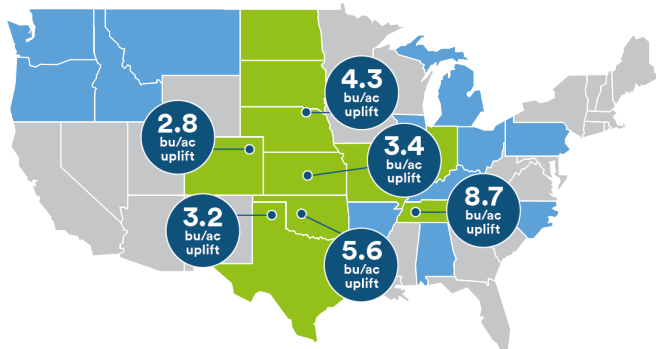
*Product performance information based on third-party field trials. Results will vary across growers and farm operations. A number of variables may affect agronomic outcomes. Indigo does not make any representations, warranties or guarantees as to any specific results or outcomes. Product may not be available in all areas. Limitations, terms, and conditions apply. [V1.A 12.01.22]



Winter Wheat + Cover Crops

biotrinsic® M36

biotrinsic® results show strong performance across winter wheat geographies



- Research and testing locations
- Recommended geography



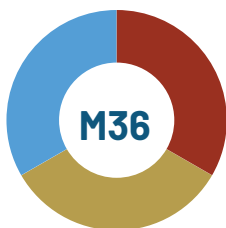
PRODUCT DETAILS

Pkg Treats	Pkgs/Case	Case Size/Pail	Case Treats	Unit Measure
200 units	1	1x200	200 units	50 lbs

200 units



*Product performance information based on third-party field trials. Results will vary across growers and farm operations. A number of variables may affect agronomic outcomes. Indigo does not make any representations, warranties or guarantees as to any specific results or outcomes. Product may not be available in all areas. Limitations, terms, and conditions apply. [V1.A 12.01.22]



COMPATIBILITY REFERENCE SHEET

biottrinsic



**SATISFACTION
GUARANTEE**
100% with replant policy.

APPROVED SEED TREATMENT PACKAGES

Indigo's proprietary collection of seed treatments powered by the world's beneficial microbes contains live organisms that could be harmed by some commercially available seed treatments. The following treatment packages have been reviewed by Indigo for compatibility and can be safely used in conjunction with biottrinsic[®] by Indigo[®] biological products. Use of other seed treatments not listed below could risk damage to the Indigo microbes and negatively impact product performance. Please consult with Indigo if there are questions on compatibility of specific seed treatments.

biottrinsic[®] M36 FP

APPROVED SEED TREATMENTS PLANTING WINDOW (DAYS)

Untreated	15
Allegiance [®] FL/LS	15
Cruiser [®] 5FS	15
CruiserMaxx [®] Vibrance [®] Cereals	15
Maxim [®] 4FS	15
Nipsit [®] Suite Cereals OF	15
Raxil [®] Pro MD	15
Sativa [®] IMF Max	15
Stamina [®] F4	15
Soilbiotics [®] 1R	15
TMI-50	15
Vibrance [®] Extreme	15
Warden [®] Cereals 360	15
Warden [®] Cereals HR	15
Warden [®] Cereals WR11	15

biottrinsic[®] M36 WP + E15 WD

APPROVED SEED TREATMENTS PLANTING WINDOW (DAYS)

Untreated	30
Allegiance [®] FL/LS	30
Cruiser [®] 5FS	30
CruiserMaxx [®] Vibrance [®] Cereals	30
Maxim [®] 4FS	30
Nipsit [®] Suite Cereals OF	30
Raxil [®] Pro MD	30
Sativa [®] IMF Max	30
Stamina [®] F4	30
Soilbiotics [®] 1R	30
TMI-50	30
Vibrance [®] Extreme	30
Warden [®] Cereals 360	30
Warden [®] Cereals HR	30
Warden [®] Cereals WR11	30

Please contact Indigo at (901) 250-5737

if your chemistry is not on this list, or if you have any questions regarding this product and its compatibility.

Growers are solely responsible for understanding and abiding by all applicable current:

(i) product use label directions, including restrictions for use; and (ii) federal, state and/or local regulations regarding the use of such product(s). Indigo disclaims any and all liability in connection with such grower obligations and practices.

This document is produced for marketing/promotional purposes only. Except for the Grower Satisfaction Guarantee as expressly described, Indigo does not make any guarantees with respect to any outcomes of any Indigo product or service. A wide range of variables affect product performance, your results may vary. Product may not be available in all areas. Registered trademarks are the property of their respective owners, and are used here for identification purposes only. [V1.A 12.01.22]

50 South B.B. King Blvd | Memphis, TN 38103 | (901) 250-5737 | biottrinsic@indigoag.com | growbiottrinsic.com





X12

Biofungicide

for Wheat Crops

PRODUCT INFORMATION

biottrinsic



SATISFACTION
GUARANTEE
100% with replant policy.



Biofungicide

biotrinsic® X12

Indigo's Biological Seed Treatment

Plant for Performance and Grow with Confidence

biotrinsic® X12 is a biological seed treatment that prevents soil borne fungal diseases, germination, and stand establishment.

FEATURES AND BENEFITS

A molecule produced by soil bacteria as a defense mechanism against fungi.

Registered by the EPA.

Works through a Group 48 / Ergosterol binding site of action.

Protects yield potential by:

- Broad fungal disease control.
- Improved germination and stand protection.
- Excellent seed safety with no phytotoxic seedling stress.
- Compatible with other seed treatments and inoculants.
- No time restrictions between treatment and use.



Untreated

biotrinsic® X12

Drought Stress during flowering and grain fill:

Data averaged over 42 confirmed Rhizoctonia and Fusarium data points

+20%
increase

Plant
Emergence

+3.5%
better than

The Chemical
Control

81%
win rate

Fusarium and
Rhizoctonia trials

*Product performance information based on third-party field trials. Results will vary across growers and farm operations. A number of variables may affect agronomic outcomes. Indigo does not make any representations, warranties or guarantees as to any specific results or outcomes. Product may not be available in all areas. Limitations, terms, and conditions apply. [V1.A 12.01.22]

50 South B.B. King Blvd | Memphis, TN 38103 | (901) 250-5737 | biotrinsic@Indigoag.com | growbiotrinsic.com

biotrinsic®



Biofungicide
biotrinsic® X12

PRODUCT DETAILS

CAN BE USED ON

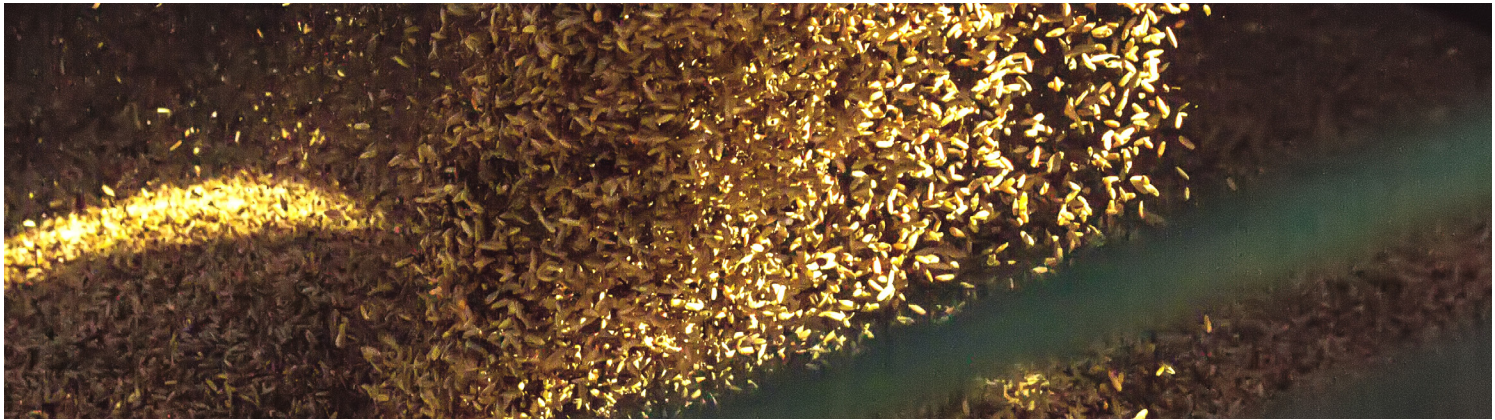
- Dryland or Irrigated fields.
- Crops that are planted between early to late planting windows.
- All wheat varieties and traits.

Pkg Treats	Pkg Size	Case	Case Treats	Unit Measures
200 units	2.5 gal jug	1x200	200 units	50 lbs

Application Rate: 1.23 fl oz / CWT

HOW TO USE IT

- Seed-safe formulation that mixes well with other seed care products.
- Dissolves in water for easy slurry mixing.
- Minimum shelf life of 2 years.
- Low use rate 1.23 fl oz./cwt.



*Product performance information based on third-party field trials. Results will vary across growers and farm operations. A number of variables may affect agronomic outcomes. Indigo does not make any representations, warranties or guarantees as to any specific results or outcomes. Product may not be available in all areas. Limitations, terms, and conditions apply. [V1.A 12.01.22]





COMPATIBILITY REFERENCE SHEET



**SATISFACTION
GUARANTEE**
100% with replant policy.

APPROVED SEED TREATMENT PACKAGES

Indigo's proprietary collection of seed treatments powered by the world's beneficial microbes contains live organisms that could be harmed by some commercially available seed treatments. The following treatment packages have been reviewed by Indigo for compatibility and can be safely used in conjunction with biottrinsic[®] by Indigo[®] biological products. Use of other seed treatments not listed below could risk damage to the Indigo microbes and negatively impact product performance. Please consult with Indigo if there are questions on compatibility of specific seed treatments.

biottrinsic[®] X12 WD

APPROVED SEED TREATMENTS

PLANTING WINDOW (DAYS)

Untreated	365
42-S Thiram	365
Acceleron [®]	365
Allegiance [®]	365
Allegiance [®] FL/LS	365
Apron [®]	365
Captan 4L	365
Cruiser [®]	365
Cruiser [®] 5FS	365
CruiserMaxx [®] Vibrance [®] Cereals	365
Dynasty [®]	365
Gaucho [®]	365
Maxim [®] 4 FS	365
Trilex [®]	365
Vibrance [®]	365
Vibrance [®] Extreme	365

Please contact Indigo at (901) 250-5737

if your chemistry is not on this list, or if you have any questions regarding this product and its compatibility.

Growers are solely responsible for understanding and abiding by all applicable current:

(i) product use label directions, including restrictions for use; and (ii) federal, state and/or local regulations regarding the use of such product(s). Indigo disclaims any and all liability in connection with such grower obligations and practices.

This document is produced for marketing/promotional purposes only. Except for the Grower Satisfaction Guarantee as expressly described, Indigo does not make any guarantees with respect to any outcomes of any Indigo product or service. A wide range of variables affect product performance, your results may vary. Product may not be available in all areas. Registered trademarks are the property of their respective owners, and are used here for identification purposes only. [V1.A 12.01.22]

50 South B.B. King Blvd | Memphis, TN 38103 | (901) 250-5737 | biottrinsic@indigoag.com | growbiottrinsic.com





50 South B.B. King Blvd | Memphis, TN 38103 | (901) 250-5737 | biotrinsic@indigoag.com | growbiotrinsic.com